



**Nuriootpa  
High School**

# Site Learning Plan

2025 - 2029



**Government  
of South Australia**

Department for Education



## Acknowledgement of Country

*These cultural lands have long been recognised as a place of significance; a “meeting place”; a place for gathering, connection and community. A place with the **intention** and **purpose** for sharing ideas, culture, knowledge, products and services.*

*For tens of thousands of years, we have been a place driven with the purpose of **Entrepreneurship** – starting with our First Nations Peoples (Peramangk, Kurna and Ngadjuri peoples); building a rich and vibrant legacy which has continued to current times in the Barossa Valley where **Innovation, Perseverance** and **Sustainability** have been central to our community across generations.*

*We carry forward the spirit of **purpose, innovation** and **enterprise** and invite you on this journey.*



## School Context

Nuriootpa High School is a well-achieving Secondary School located in the Barossa Valley, South Australia.

We provide quality learning opportunities and contextualised experiences for young people from Years 7 to 12, offering a variety of main-campus, specialist and inclusive education programs. Working in partnership and collaboration with our broader community, we offer accredited Wine School & Agricultural programs, Automotive program, Specialist Music programs and much more.

The regional Inclusive Education Centre (IEC) is co-located on-site, providing specialised education for students with high support needs. Additionally, our school includes a Tailored Learning Centre, which is purposefully located at a satellite site within walking distance of the main campus.

We also offer specialised pathways such as Vocational Education and Training (VET) and School-Based Apprenticeship models, to accelerate young people's journeys for successful careers and fulfilling livelihoods.

In 2026 Nuriootpa High School has been selected as a national flagship 'Entrepreneurial Specialist School', as part of 20 schools across Australia. Our aim is to equip our young people with the skills, capabilities and dispositions to *'think like an Entrepreneur'*, inclusive of any career, program or pathway they will pursue in school and life.



## Our School Growth Philosophy

**Learning** is at the core of our school philosophy for individual, collective and organisational school improvement. Underpinned by the Department for Education of South Australia's *Improvement as Learning* philosophy, we prioritise learning from successes and challenges across all aspects and elements of our school. When we **purposefully find the 'learning' from any situation or experience, we can intentionally improve**. This is in alignment with the Department for Education's *Our Purpose for Public Education strategy*'s focus for 'being the best at getting better', so we can improve educational outcomes and unlock every young person's potential now and in the future.

## Our School Vision

Nuriootpa High School is a **nurturing** and **inclusive** environment that prepares young people for their future.

We provide an enriching and engaging curriculum, emphasising a sense of **belonging** and **empowering** students through authentic, flexible learning experiences.

We foster community connections to strengthen student **wellbeing** and **resilience**, working in partnership with parents and caregivers.

Together, we build a **vibrant** and **proud** school community, laying the foundation for **lifelong learning** and **success**.

## Our School Purpose

Nuriootpa High School is an **inclusive** environment where a **passion for learning** is ignited, curiosity is cultivated, and students are inspired.

Our school community is founded on **trust and respect**. Our learning environments are recognised for excellence and high quality.

We are **innovative, authentic**, and **flexible** in guiding students along their chosen pathway.

We celebrate **diverse pathways** to success.



## Our School Values

Our school values have been co-designed with students, parent/caregivers and staff through a rigorous consultation process. Our values inform, and are informed by, our school vision, values and philosophy. We live our school values across all aspects of school life.

### Growth

- we develop by being curious, reflective, and open to learning
- we take responsibility and are accountable for our actions
- we give our best effort, keep trying, and step up to challenges.

### Respect

- we show kindness in our words, actions, and relationships
- we are empathetic, compassionate, and value diversity
- we support and look out for each other, treating others the way we would like to be treated.

### Resilience

- we are flexible and adapt to change
- we persevere, show determination, and keep going even when it's hard
- we learn from mistakes and take opportunities to improve.



## Overview – Our Site Learning Plan Goals

**Goal 1: Grow Learner Agency through student Entrepreneurial Learning Capabilities.**

**Goal 2: Grow our School Climate and Engagement with our Community.**

**Goal 3: Increase Year 12 Completion rate, recognised pathways and A, A/B grades.**

**Goal 4: Ensure students achieve at or above expected growth rate between Year 7 and 9 in Literacy and Numeracy.**



## Goal 1: Grow Learner Agency through student Entrepreneurial Learning Capabilities.

We want to equip every young person at our school, with the **skills to think like an Entrepreneur**. In an increasingly globalised, interconnected and collaborative world, we know that there are many new and emerging opportunities for our young people. Entrepreneurial Learning helps students to find collaborative opportunities to grow Sustainability, Community and Economy.

### Actions:

- Encourage authentic opportunities for **Learner Agency** within Curriculum and Co-Curriculum learning.
- Recognise, reward and promote **natural evidence** of Learner Agency and Dispositions across programs.

### Sources of data:

- A to E Grade Data
- Entrepreneurial Learning Hub
- Internal WEC Survey results (term-by-term)
- House Points

### Targets:

- 100% of students and staff participate in Entrepreneurial Capabilities development in a subject.
- 100% of staff participate in an Entrepreneurial Learning Professional Program (National Project).
- +1.5% growth in School GPA from 2025.



## Goal 2: Grow our School Climate and Engagement with our Community.

We grow a school environment where every young person can **learn, lead** and **thrive**. We are a well performing school which nurtures individual student **aspirations** and collective student **engagement** in school and life. Every student **belongs, engages** and **connects**. We invest in our local community relationships, work in partnership and employ **Restorative approaches** to develop our young people.

### Actions:

- We intentionally grow proactive and responsive **Trauma-informed pedagogies** and **practices**.
- We intentionally co-design a **positive school culture** involving: student, staff and parents/caregivers.

### Sources of data:

- Wellbeing and Engagement Collection (WEC) Survey
- Internal WEC Survey (term-by-term)
- School House Points
- School Climate & Perspective Workplace surveys

### Targets:

- +2% growth on baseline Wellbeing and Engagement (WEC) measures.
- +2% growth on baseline internal Wellbeing and Engagement (WEC) measures.
- +2% growth on the number of Positive Recognitions per term (Terms 1 to 3).



## Goal 3: Increase Year 12 completion rate, recognised pathways & A, A/B grades.



Our Teaching & Learning practices are **Differentiated, Inclusive** and **Innovative**. We meet students 'where they are at' and employ **Curriculum & Pedagogy** to grow their **knowledge, capabilities** and **dispositions**. We utilise quality learning, teaching and assessment practices to scaffold areas of growth and recognise student achievement.

### Actions:

- We work in partnership with students, families and staff for **school completion** and **recognised pathways** for every young person.
- We review achievement and **differentiate learning** for every young person to improve on their learning.

### Sources of data:

- A to E Grade Data
- Grade Point Average (GPA):
  - Year Level, Learning Area, Term-by-term, Annual

### Targets:

- 100% SACE achievement and recognised post-school pathways.
- +2% growth on baseline A and B grade bands for Stage 2 subjects.



## Goal 4: Ensure students achieve at or above expected growth rate between Year 7 and 9 in Literacy and Numeracy.

We ensure a **guaranteed curriculum** for every young person, which recognises their current **learning dispositions** and grows their capabilities for success. We are a **learning-focused school**, which focuses on learning Literacy and Numeracy skills in authentic, differentiated and flexible contexts. We prepare students with **strong Literacy and Numeracy skills for life**.

### Actions:

- We focus on **explicit teaching** and learning of **Literacy** and **Numeracy** skills across subjects.
- We provide **organic opportunities** for students to express agency using their Literacy and Numeracy skills.

### Sources of data:

- NAPLAN data:
  - Year 7, Year 9
  - Comparative years
- Literacy and Numeracy subject data

### Targets:

- +2% growth on baseline measures for Year 7 and Year 9 NAPLAN.
- 100% of students achieve predicted growth between Year 7 and Year 9 NAPLAN results.

# OUR STRATEGY FOR PUBLIC EDUCATION



Government of South Australia  
Department for Education



## CHILDREN AND STUDENTS LEARNING AND THRIVING

### OUR PURPOSE

Public education is for every child and young person in every community across our state.

Educators and staff work in partnership with families and communities to nurture, develop and empower all South Australian children and young people with the knowledge, skills and capabilities they need to become fulfilled individuals, active, compassionate citizens and lifelong learners.

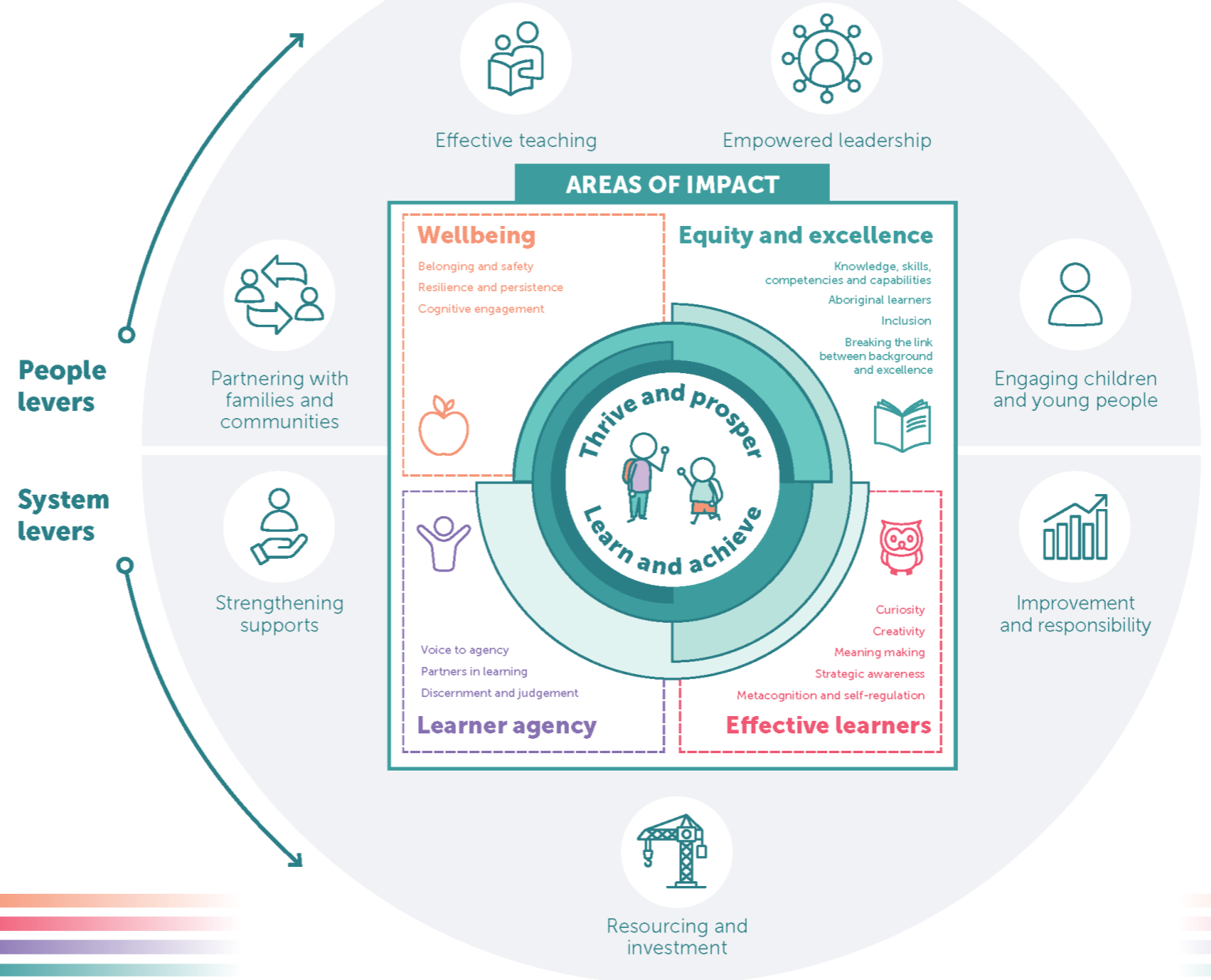
Our preschools and schools are the heart of local communities. They are safe, inclusive, and collaborative – a place where every child and young person is encouraged to contribute, develops positive relationships, has a say in their learning, and where their needs, interests and cultures are recognised and supported.

We are relentless in our ambition for all children and young people to enter the world beyond the classroom ready to learn and to create opportunities to live a satisfying and fulfilling life of their choosing.

When our children and young people thrive so does South Australia.



### LEVERS FOR IMPACT



People levers

System levers

MEASURING SUCCESS



We will use success measures aligned to our areas of impact to guide our understanding of how our public education strategy is tracking.

### GUIDING PRINCIPLES

- Collective responsibility
- Learning system
- Evaluate for impact
- Tight and flexible
- Trust and verify

