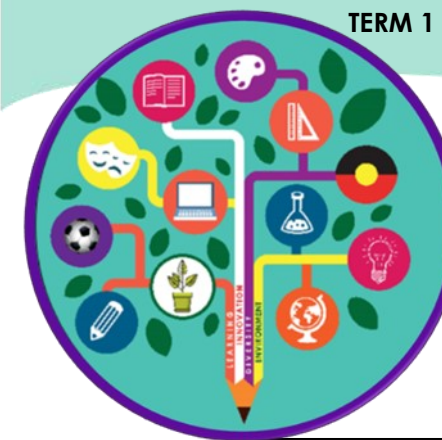


TERM 1 2026 DIARY DATES

	MONDAY	TUESDAY	WEDNESDAY	THURSDAY	FRIDAY
WEEK 1	26/1 Public Holiday Australia Day	27/1 START TERM 1	28/1	29/1	30/1
WEEK 2	2/2 Wheelie Club Breakfast Club	3/2 Wheelie Club Breakfast Club	4/2 Wheelie Club Breakfast Club	5/2 Wheelie Club Breakfast Club	6/2 Wheelie Club Breakfast Club
WEEK 3	9/2 ODYSSEY (BA1) TEAMWORK (BA2) Wheelie Club Breakfast Club	10/2 AGM 3.30 - 4.00pm Wheelie Club	11/2 Wheelie Club Breakfast Club	12/2 Wheelie Club Breakfast Club	13/2 Wheelie Club Breakfast Club
WEEK 4	16/2 Wheelie Club Breakfast Club	17/2 Wheelie Club Breakfast Club	18/2 Wheelie Club Breakfast Club	19/2 Wheelie Club Breakfast Club	20/2 Wheelie Club Breakfast Club
WEEK 5	23/2 Wheelie Club Breakfast Club	24/2 Wheelie Club Breakfast Club	25/2 Wheelie Club Breakfast Club	26/2 Wheelie Club Breakfast Club	27/2 Wheelie Club Breakfast Club
WEEK 6	2/3 Wheelie Club Breakfast Club	3/3 Wheelie Club Breakfast Club	4/3 Wheelie Club Breakfast Club	5/3 Wheelie Club Breakfast Club	6/3 Wheelie Club Breakfast Club
WEEK 7	9/3 Adelaide Cup Public Holiday	10/3 Student Free Day	11/3 NAPLAN Wheelie Club	12/3 NAPLAN Wheelie Club	13/3 NAPLAN Wheelie Club
WEEK 8	16/3 NAPLAN Wheelie Club Breakfast Club	17/3 NAPLAN Wheelie Club Breakfast Club	18/3 NAPLAN Wheelie Club Breakfast Club	19/3 NAPLAN Wheelie Club Breakfast Club	20/3 NAPLAN Wheelie Club Breakfast Club
WEEK 9	23/3 NAPLAN Wheelie Club Breakfast Club	24/3 Wheelie Club Breakfast Club	25/3 Wheelie Club Breakfast Club	26/3 Banksia Excursion Migration Museum	27/3 Wheelie Club Breakfast Club
WEEK 10	30/3 Wheelie Club Breakfast Club	31/3 School Dental Visit Wheelie Club Breakfast Club	1/4 Wheelie Club Breakfast Club	2/4 Wheelie Club Breakfast Club	3/4 Public Holiday Good Friday
WEEK 11	6/4 Public Holiday Easter Monday	7/4	8/4	9/4	10/4 Sports Day - 2pm Finish



TERM 1 ISSUE 1

RESPECT ~ RESPONSIBILITY ~ TEAMWORK

February 2026

CHRISTIE DOWNS PRIMARY SCHOOL NEWSLETTER



Principal Message

Dear Parents and Caregivers,

A very warm welcome to everyone as we begin an exciting new year at Christie Downs Primary School. I hope you all had a restful break and enjoyed precious time with your families, friends and carers. Whether you are returning or joining us for the first time, I am delighted to welcome you to our vibrant learning community. I would also like to welcome back some familiar teachers such as Carmen Britton, Nickeah Condo, Michael Daly, Bec Denyer, Michael Elts, Tuesday Godfrey, Cassie Newbery, Alex McGrath, Todd McGrath and welcome to staff Jaye Bessell.

At Christie Downs Primary, we are committed to nurturing every child's growth—academically, socially, and emotionally. Our dedicated staff work together to create a safe, inclusive environment where every student is encouraged to achieve their personal best. We continue to focus on building strong foundations in literacy and numeracy and provide a wide range of engaging learning experiences both inside and outside the classroom.

Our Governing Council AGM will be held on Tuesday, 10 February, commencing at 3:10pm in the staff room. If you are interested in nominating yourself to join our dedicated Governing Council team, please visit the front office for further information.

We warmly invite all community members to attend the AGM, regardless of whether you wish to join the Governing Council. This meeting is a valuable opportunity to learn more about the school's direction and future plans.

Term 1 Student Free Day

Please note that Tuesday, 10 March will be a student free day. On this day, staff will be participating in MAPPA Training, which involves multidisciplinary approaches to better support our students.

Partnerships between home and school are vital to student success. I encourage you to stay connected through our regular communications, upcoming events, and volunteering opportunities. Please don't hesitate to reach out with any questions or concerns—you are always welcome.

Together, we look forward to achieving great things in 2026. Thank you for entrusting us with your child's education. Let's make it a wonderful year ahead!

Warm regards,

Gail Evans
Principal
Christie Downs Primary School



IMPORTANT DATES FOR TERM 1 2026

10/2

Tues week 3
AGM
3.30-4pm

10/3

Student Free
Day

11-23/3

NAPLAN

30/3—2/4

DENTAL VISIT

3/4 & 6/4

Fri Week 10 &
Mon Week 11
Public Holidays
Easter

10/4

SPORTS DAY
Last Day
Term 1
2.00pm Finish



Dream
Believe
Achieve

LEADERSHIP TEAM :

Principal: Gail Evans

Senior Leader 1 Curriculum: Todd McGrath

Senior Leader 1 Inclusive Education: Leanne Jacobs

Student Wellbeing Leader: Jo Swift

Elizabeth Road, Christie Downs, SA 5164

Tel: (08) 8382 3266

Fax: (08) 8382 2205

Engagement for Learning

Welcome back to Christie Downs Primary School in 2026. I hope you all had a safe and enjoyable holiday. It is great to return to school and see so many excited faces. Once again, my main focus is on mainstream, curriculum and supporting the educators deliver a high quality learning program.

At Christie Downs Primary we value the importance of reading at home. Below is a table to show how important reading with your child is. Along with some suggestions to help make a reading routine at your home and build successful readers:

Read Every Night

Whether you read one book or five that night, carving out time to dedicate to reading helps to teach young children that reading is important and a priority in their lives.

Make Reading Exciting

Try going to your local library to check out a book or a bookstore to buy some new children's books. By bringing your child along to select new books, they will be more interested in engaging with them when you get home.

Ask Questions

No matter the age, interact with the book by asking questions. If you have a book that happens to have more words on the page then they will concentrate on, engage the child by asking questions about the pictures and what they think may happen next. Try asking open-ended questions to hear your child's thoughts on what the book is talking about versus questions that can be answered with a simple one-word answer.

Transition

I will oversee transition again this year. Both from kindergarten to reception and year 6 to high school. If you have any queries regarding your child's journey throughout our reception year or transitioning to high school then don't hesitate to ask.



Community

Learning Together Communities Playgroup

Come and join us for playgroup!

When: Tuesdays and Fridays 9:30-11am (during the school term)

Where: Learning Together Communities. Enter via Justin Cres.

Phone: 8382 5950 for more info.

Cost: Free

Bread and produce available to take home most weeks- no charge.

Playgroup will give your child the opportunity to develop the following skills- literacy, numeracy, social/emotional, fine and gross motor. It will also help them become familiar with routines and develop dispositions like curiosity, resourcefulness and confidence.

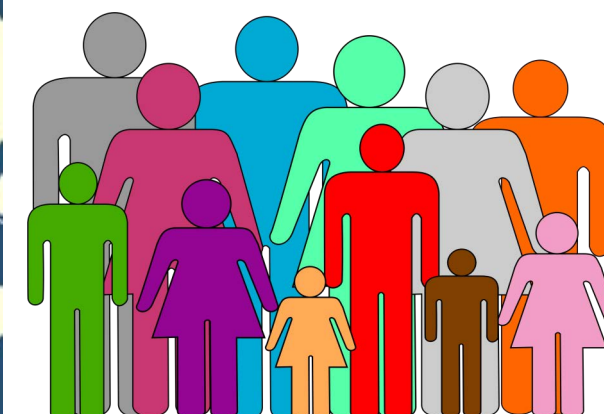
U13S JUNIOR BOYS WANTED

ARE YOU BORN BETWEEN 2013/2014?

We're looking for players to join our U13 Junior Boys team this season! All experience levels welcome — new players encouraged!

- ✓ Fun, friendly community club
- ✓ Great coaches & team environment
- ✓ Make mates & build confidence
- ✓ Fitness, skills & teamwork

ENQUIRE TODAY
Corey Allen
juniors@cbfcsaints.org
0429 611 291



CDPS WHEELIE CLUB

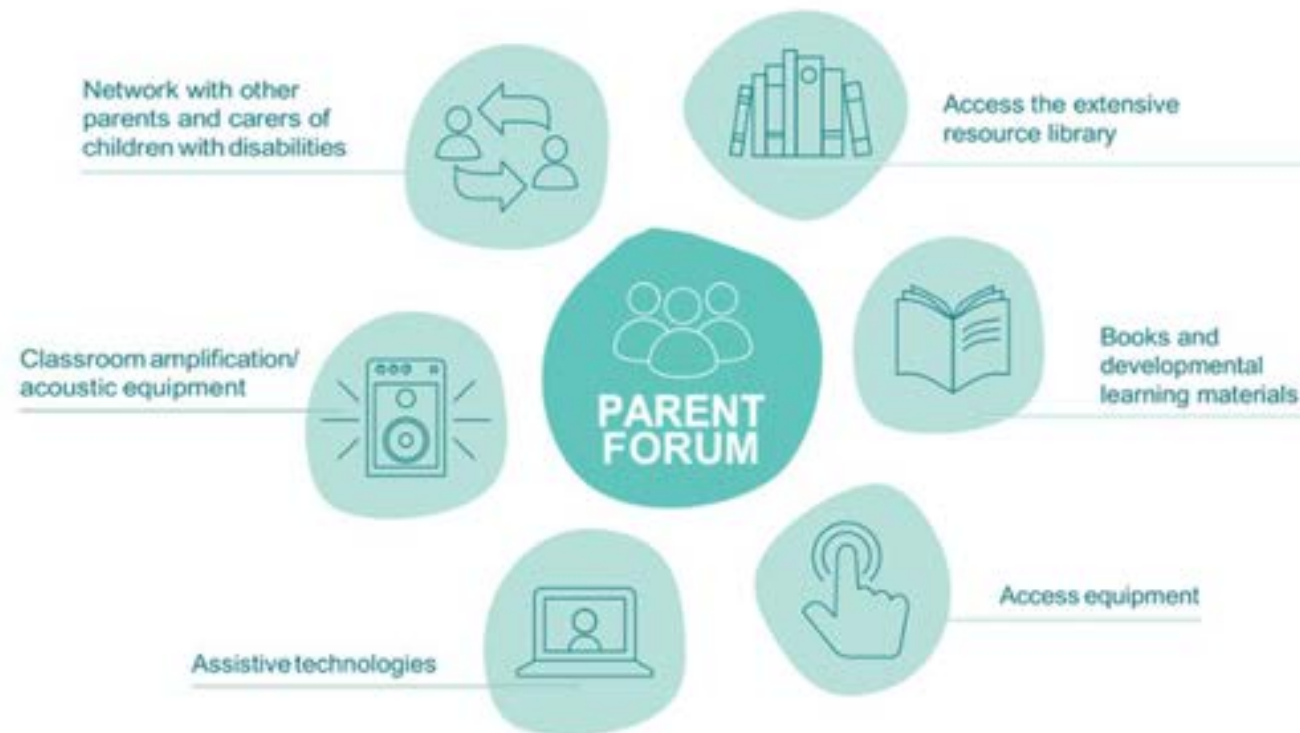
Every morning 8:15 - 8:45am

From Monday Week 2 to Friday Week 10

Bring your bike or scooter or use one of the schools.

Meet under the Cola Hats must be worn

PARENT FORUMS



LOCATION AND ACCESS

Parking is available in Northey Avenue, Marlborough Street and surrounding streets.

Entry to the parent forums is via the SIES reception from Northey Avenue.

Public transport

The H33 bus travels to and from the city via Marlborough Street. Stop 27 is the closest bus stop to SIES.



Scan here to register and find out more.

8235 2871 Education.ParentForum@sa.gov.au
www.sies.sa.edu.au/parent-forum/



Engagement for Learning

Kitchen Garden

The Kitchen/Garden program will continue to grow this year. With the opportunity for students to engage with cultivating and cooking food every fortnight. We welcome Alicia and JP back to run the program. Students will be invoiced \$15 every term (they participate) to go towards produce and support running the program. Below is the menu for term 1.



Kitchen Garden

Summer

week 2 and 3

Malaysian Laksa soup
with steamed coconut buns



week 4 and 5

Poke Bowl
"Poke- to cut or slice"
Rice, fresh vegetables, and tuna

week 6 and 7

Mexican fish cakes
with corn salsa

Term 1

Autumn
week 8 and 9

Eton Mess
with fresh berries and Indigenous River Mint

School Card

Applications for School Card Assistance are now being processed. You can either apply for School Card online at www.sa.gov.au and follow the links for school card assistance. Alternatively you can come into the office and fill in a paper form and it will be processed. School card must be applied for each year.

Front Office





We're excited to kick off a brand-new school year at **Christie Downs Primary School!**

A warm welcome to all our new families, and a big hello to our returning students and families!

2026 is set to be another big year, packed with learning, fun, and exciting opportunities for everyone!

Dream Believe Achieve Parliament

I am excited to announce that our Student Parliament will be reinvigorated in 2026. Student applications are currently being completed, with our **Student Parliament Election to be held in Week 3**. Student Parliament will be a genuine decision-making body, providing students with a real voice in school life in line with **Article 12 of the United Nations Convention on the Rights of the Child**.

Our Student Parliament will be known as the **Dream Believe Achieve Parliament**.

Every student and educator will vote to elect a **Student Prime Minister**, who will be selected from our Year 6 cohort. The Student Prime Minister will lead the Parliament and work closely with the Ministries, Governing Council and the Principal.

Students and staff will take part in an Election Day, voting for the student they wish to represent them. Our Parliament will operate through three Ministries, where students will work on key focus areas throughout 2026. Educators will also play an important role as Advisors, supporting students in their leadership roles.

We look forward to sharing more about our Ministries and student leaders in the coming weeks.

Berry Street Education Model

The Berry Street Education Model is embedded in our daily teaching practice. We have adapted Berry Street strategies to respond to the individual needs of our students, supporting their growth and achievement.

All educators have been trained in the Berry Street Education Model, and new staff are supported and mentored to develop their understanding and use of these strategies to ensure consistent support for all students.

The following strategies have been implemented across our school to create a safe, supportive and engaging learning environment:

Breakfast Club

Breakfast Club is open every day and is located in our gym from week 2 until week 9. Huge thanks to JP for running such a great Breakfast Club. Head down to the gym from 8:15 every morning and grab a bite to eat! Families are welcome!

Mobile Phones and personal devices

The Department's policy states that primary school students are not permitted to use mobile phones or personal electronic devices during school hours. Our school supports this policy and recognises that, in some circumstances, students may need to bring a device to school.

Legitimate reasons for bringing a mobile phone or personal device to school include:

- ensuring personal safety while travelling to and from school
- enabling parents and carers to contact students outside of school hours

During the school day, students are not permitted to access or use their mobile phones or personal devices. All devices must be switched off or placed on silent before being handed in at the beginning of the school day.

Devices are securely stored in the Front Office and will be returned to students at the end of the school day.



PARENT FORUMS



Presented by the Statewide Inclusive Education Services (SIES), parent forums are a supportive and safe space for families and caregivers to connect while gathering information and resources to support your child's education.



Term 1 topic: **SETTING UP FOR SUCCESS**

Come along to learn more about:

- Practical advice for starting the new school year.
- Department for Education supports and services, including Student Support Services, healthcare plans, external providers, personalised learning, transitions and more.
- SIES resources and services while connecting with our Senior Advisors.



NEXT PARENT FORUM:
Wed 18th Feb 2026
10.00am to 1.00pm



WHERE:
Statewide Inclusive Education Services
72a Marlborough Street
Henley Beach SA 5022
Lunch provided.



8235 2871



Education.ParentForum@sa.gov.au



www.sies.sa.edu.au/parent-forum/



Government of South Australia
Department for Education

Autism Inclusive Teacher (AIT)

At Christie Downs Primary School, we are committed to fostering an inclusive, supportive learning environment where every student feels valued and empowered to succeed. Central to this commitment is the role of the Autism Inclusion Teacher (AIT), which focuses on strengthening educational outcomes for our neurodivergent students.

The AIT plays a vital role in developing and implementing inclusive practices that respond to the diverse needs of learners. By working collaboratively with teachers, support staff, and families, the AIT helps ensure students receive personalised support that aligns with their individual strengths, learning styles, and goals.

In my role as Autism Inclusion Teacher, I am dedicated to empowering students to reach their full potential within a safe and inclusive school community. Through collaboration, professional learning, and innovative approaches, I support staff to create environments where all students can thrive.

In 2026, I will be working closely with the School Parliament to plan and organise inclusive Lunch Time Groups, celebrate Neurodiversity Week, and develop a range of other exciting activities that promote understanding, belonging, and student voice across our school. I will also continue to share information with parents about Parent Forums and workshops as they become available.

I look forward to another positive and successful year working together to support our students.

Nicole Guy-Rees
(AIT)



Free workshop

1 Day Autism Workshop for Parents and Carers
Adelaide, SA

Scan the QR code or [click here](#) to register

This workshop is for parents, full time carers and grandparents.

During the workshop you will learn about:

- The diversity of autism
- Sensory processing
- Working together with your child's school.

Learn more about autism and ways to strengthen the partnership between home and school.

Morning tea and a light lunch will be provided

Interpreters available upon request

For more information or to register visit:
www.positivepartnerships.com.au/PC
jcousins@positivepartnerships.com.au

0473 004 024

Positive Partnerships is funded by the Australian Government Department of Education. The views expressed within this program do not necessarily represent the views of the Australian Government or the Australian Government Department of Education.

Wellbeing for Learning

Circle Time:

Students are warmly welcomed into their classrooms each morning by their educator or a student leader. Each class begins the day with Circle Time, providing a consistent, positive and predictable start to the day.

Circle Time supports the key domains of the Berry Street Education Model as follows:

Body (Self-regulation and readiness to learn)

- **Greeting** – Friendly physical and social connection (high five, handshake, smile, fist bump) supports students to feel calm, safe and ready to learn.
- **Positive Primer** – Short games, songs, dances or videos activate students' bodies and brains, improving focus and emotional regulation.

Relationships (Safety and connection)

- **Greeting** – Builds a sense of belonging and strengthens relationships between students and educators.
- **What Went Well (WWW)** – Encourages students to listen to and celebrate each other's successes and positive choices.
- **Stamina (Confidence and persistence)**
- **What Went Well (WWW)** – Builds self-belief by recognising effort, learning achievements and positive behaviour.
- **Values and Expectations** – Supports students to develop responsibility and consistency in their behaviour and learning.

Engagement (Curiosity and participation)

- **Positive Primer** – Captures student interest and promotes active participation.
- **Announcements** – Connects learning to real school events and student voice, increasing relevance and motivation.

Character (Strengths and values)

- **Values and Expectations** – Reinforces school values, attendance and behaviour expectations.
- **What Went Well (WWW)** – Develops gratitude, optimism and reflective thinking.

Brain Breaks:

Our classes will be enjoying Brain Breaks throughout the day to help keep minds sharp and bodies moving!

Brain Breaks are short, fun activities that give the brain a boost by getting blood flowing and helping students refocus. Some Brain Breaks get students up and moving, while others help them slow down and relax — both are great for learning and wellbeing.

Be sure to ask your child what Brain Breaks they did today... you might even get a demonstration at home! 😊

Attendance

We all want our students to receive a great education, and the building blocks for success begin with coming to school every day.

When students attend regularly, they don't just learn academic skills – they build confidence, friendships, and a love of learning.

When too many days are missed, important learning is missed too, including the foundation skills needed for success in later years.

Further information

For more information and resources to help address attendance issues, visit:

The Australian Parenting Website: raisingchildren.net.au

Department for Education; Helping children and young people learn.

Website: education.sa.gov.au

Kids Helpline Phone and Web Counselling

Phone 1800 55 1800 Website: kidshelpline.com.au

Please feel free to contact myself on 83823266 or pop in for a chat.

Jo Swift
Student Wellbeing Leader



Inclusive Education

Inclusive Education

Welcome to 2026. I look forward to continuing to support all learners, families and educators to collaborate and ensure that every student's learning pathway promotes engagement and growth.

As the Inclusive Education Leader, I have the privilege of working across all classes to: Support educators in differentiating learning tasks, ensuring we meet the individual needs of each learner. Liaise with our Support Services team—including the Inclusive Educator, Speech Pathologist, Psychologist and Behaviour Educator—regarding: Individual learner needs The Small Class Special Options High School Placement process for Year 6 students. Support educators, learners and families with the One Plan process. Assist educators in preparing applications for requesting additional support funding.

To best support your child's learning journey, it is crucial that our school has the most up-to-date information, including assessment reports, therapy reports and health care plans. These may include documents from psychologists, occupational therapists, physiotherapists, speech pathologists, developmental educators, paediatricians, or other outside professionals. Sharing these reports helps ensure consistent strategies between home and school, benefitting your child's learning. Updated reports can be given to your child's teacher, handed in at the front office, or emailed directly to me at leanne.jacobs929@schools.sa.edu.au.

One Plan Meetings

We will be arranging One Plan meetings throughout Term 1. If you wish to include any members of your child's NDIS or support team, please inform your child's teacher or myself. Meetings with non-education service providers can be held either in person at school or via Teams.

Therapy Sessions and Non-Education Service Providers

Please be aware that our site does not allow therapy sessions or observations by non-education service providers to take place on site. However, we understand that families may need to pick up children early or drop them off late to attend sessions at home or at therapists' offices. We value a team approach and are happy to meet and discuss goals and strategies with therapists and families to ensure consistent support between home and school. If you wish to establish a "team around the child" approach, please collect a "Sharing of Information" form from the front office. This form enables you to provide contact details and consent for communication between your child's support team and school educators.

Small Class Special Options Placement Process

The transition process for Year 6 learners moving to high school in 2027 has commenced. Information and Support Services consent forms were sent home in Week 1. If you receive a consent form, please return it as soon as possible. If you have any questions or require further information, please do not hesitate to contact me at school.

Thank you,
Leanne Jacobs
Inclusive Education Leader



Newsletter

The Newsletter is emailed to families and you will also be able to access each copy on our schools website <https://cdownssch.sa.edu.au/>

If you haven't already, please ensure you have an updated email address on our system so we can send you a copy.

EALD

Hoan nghênh

Asalaamu alaikum

Selamat datang

آمدی

Welcome

Bem vinda

እንኳን ደህና

Benvenuto

أهلا وسهلا

Witamy

Karibu

Maligayang pagdating

स्वागत छ

ᄡᆞᆫᄡᆞᆫ

Fáilte

Marni naa pudni

स्वागत

Bienvenidos



Welcome to 2026! I would like to introduce myself to the new parents, carers and children at Christie Downs Primary School. My name is Jo McGill and I am the EALD (English as an additional language or dialect) Teacher.

We are very fortunate to have an increasing number of students with an additional language or dialect join our school and I would like to take this opportunity to warmly welcome you all to Christie Downs Primary School. We greatly value the opportunity to learn about and embrace different cultures and religions here at Christie Downs.

I will be supporting many students with English as an additional language or dialect in class and am always happy to provide support to families who have any questions about their child's learning. This year we will also be celebrating culture through our Assemblies on a Friday afternoon.

I look forward to supporting your child in their learning and helping them to share their experiences and ideas with their classes. We wish you and your child a very happy and successful year.

Jo McGill

Aboriginal Education Team 2026

Hello all and welcome back to 2026!

To our new families, my name is Clinton Calyun, I am the Aboriginal Community Education Officer. After a successful year in 2025 this year will be more exciting at Christie down's primary School and I am delighted to be in my role another year. I will be running the Aboriginal Education team by myself with great support from my leadership team. I will ensure that all of our Aboriginal students are met and to be proud of who they are to carry their cultural throughout the rest of their journey this year 2026 will be a very busy year but also a deadly year which will reflect this year's Reconciliation and NAIDOC week themes **Reconciliation theme 2026 - All in - NAIDOC Week Theme - 50 years of deadly**

I will be based in the Nunga room which has now moved to the front of the school near the staff car park so please pop in, come in, have a yarn and look at the new Nunga room.



I look forward to 2026
with you deadly mob!

