



Streaky Bay Area School NEWSLETTER

"Striving for excellence"



109 Wells Street
STREAKY BAY SA 5680
Ph: 86261202
Fax: 86261658

dl.0745.info@schools.sa.edu.au
www.streakybas.sa.edu.au

Care Respect Security Success Trust

21 May 2026

No. 8

FOR YOUR DIARY....

MAY

Mon 25 – Tues 26 Yr 10 Outdoor Ed Camp
Mon 25 – Wed 27 Yrs 5-6 SAPSASA Boys Football, Adelaide
Thurs 28 Tcharkuldu Rock Run, Minnipa
Fri 29 Yrs 5-6 SAPSASA Golf Trials

JUNE

Mon 1 - Wed 3 Yr 10 Explore Careers, Port Lincoln
Thurs 4 Yrs 9-10 Mixed Volleyball
Mon 8 KING'S BIRTHDAY
Wed 10 – Fri 12 Yr 11 Outdoor Ed Camp
Mon 15 – Fri 19 Yr 10 Work Experience
Mon 22 – Wed 24 Yr 5-6 SAPSASA Netball, Adelaide
Wed 22 – Fri 26 Yr 12 Outdoor Ed Camp
Fri 26 Yr 7-9 Badminton, SBAS

FROM THE PRINCIPAL

Hi all, it's wonderful to be back at SBAS, a hidden gem with the best office view I've ever had. This time I am here till the end of term 2, which provides me with a chance to get to better know the students, staff & families.

It also allows me time to work with all the school community to continue to review and improve what we do on a daily basis to improve the learning outcomes for all students.

ATTENDANCE AT SCHOOL

One of the most important factors in successful schooling is regular attendance. SBAS current attendance rate is 78.11%, with 17.86% approved. This equates to students missing 1218 lessons from the start of the year across the school. An average of 60 students away each day.

If children and students miss learning the basic skills in the early years of schooling, they often experience learning difficulties later on. It has been shown that irregular attendance in the early school years can lead to poor patterns of attendance in primary and secondary years.

Missing 1 or 2 days a week may not seem like much but:

IF YOU MISS	EACH YEAR THAT EQUALS	THIS IS THE SAME AS MISSING	OVER 13 YEARS OF SCHOOL FROM R-12	THIS EQUAL TO FINISHING SCHOOL
1 DAY A F/NIGHT	20 DAYS	4 WEEKS	NEARLY 1.5 YEARS	IN YR 11
1 DAY A WEEK	40 DAYS	8 WEEKS	OVER 2.5 YEARS	IN YR 10
2 DAYS A WEEK	80 DAYS	16 WEEKS	OVER 5 YEARS	IN YR 7
3 DAYS A WEEK	120 DAYS	24 WEEKS	NEARLY 8 YEARS	IN YR 4

If you want your child to be successful at school, **ATTENDANCE MATTERS.**

Under the Education Act you are required to send your child to school every day unless:

- The child is too sick to leave the house.
- The child has an infectious disease such as chicken pox, mumps or measles.
- The child has an injury preventing movement around the school.
- The child is going with his/her parents / caregivers on a family holiday that cannot be arranged during the holidays. This is organised with the principal prior to the absence through application for school exemption. Exemption forms are available from the front office.
- The principal is provided with any genuine and acceptable reason preventing the child's attendance.

Should I notify the school if my child refuses to go to school? YES - you should contact the school and speak to Leadership, Home group teacher immediately. We are here to support you in any way we can to ensure your child is a regular attender.

I would like to think between us all we can improve that daily attendance rate of 78.11% and maximize student's opportunities to become compassionate, versatile, resilient and responsible learners with the knowledge, skills and capabilities to thrive in a transforming world.

Kind Regards,
Dean Angus
Principal

Mother's Day Bake Sale & Fresh Produce

🌟 Mother's Day Bake Sale Update 🌟

Thanks to the amazing support from our community,
the bake sale raised \$670 🙌

The proceeds will be going towards new sports equipment for
the school, including netballs, footballs and basketballs for
students to enjoy.

Thank you again to everyone who baked, purchased,
volunteered and supported the day ❤️



School Bus Driver required

An expression of interest for the position of:

STREAKY BAY AREA SCHOOL BUS DRIVER 2026:

For further information regarding conditions of
employment & pay rate please contact:

Mr Tim O'Reilly
Streaky Bay Area School
109 Wells Street
STREAKY BAY SA 5680
Ph: 86261202
Email: tim.oreilly419@schools.sa.edu.au

STREAKY BAY AREA SCHOOL CLEANER WANTED

Monday to Friday 3.30pm to 6.30pm.

- Permanent part time position
- Working with children check required

For further information contact Skye
Email- Skye.rowett@millenniumsg.com
Phone-0402 134981

National Walk Safely to School Day

This Friday, 22nd May, we will participate in the annual National Walk Safely to School Day.

Students, staff, and family members don't have to only walk to school - they can ride, skate, scoot to school over a reasonable distance.

This event will go towards the 'House Champions' Competition for the end of term and end of year. Everyone that participates, staff and family members included, will receive points for his or her team and bonus points if participants make the journey **wearing their team colours, loud shirt, odd socks, dressed up in a costume etc.**

There will be three designated meeting points for students and family members that want to make the commute with others, departing at 8.15am.

The locations are:

RSL Hall - Mrs Kelsh, Ms Riley, Mrs Brown and Ms Roeske

Dragon Boat Club - Mrs Brougham, Mrs Walsh and Mr Angus

Gibson Way (The Subdivision just past the caravan park) - Mrs Box, Mrs Woolford and Mrs O'Reilly

We look forward to the students and your participation on the day!



Wonderful Women!

On Monday 11th May the primary school celebrated all of the wonderful women in our students lives. It was great to see such a good turnout of mums, aunties, grans, grandma's and special family friends. The special women in our students' lives were treated to a teacup biscuit, a hand massage and pamper, they made frames, crowns and book marks, and even had a go at some aerobics!

It was a wonderful morning that really highlighted how much students love having people that they care about coming in and spending time with them at school.

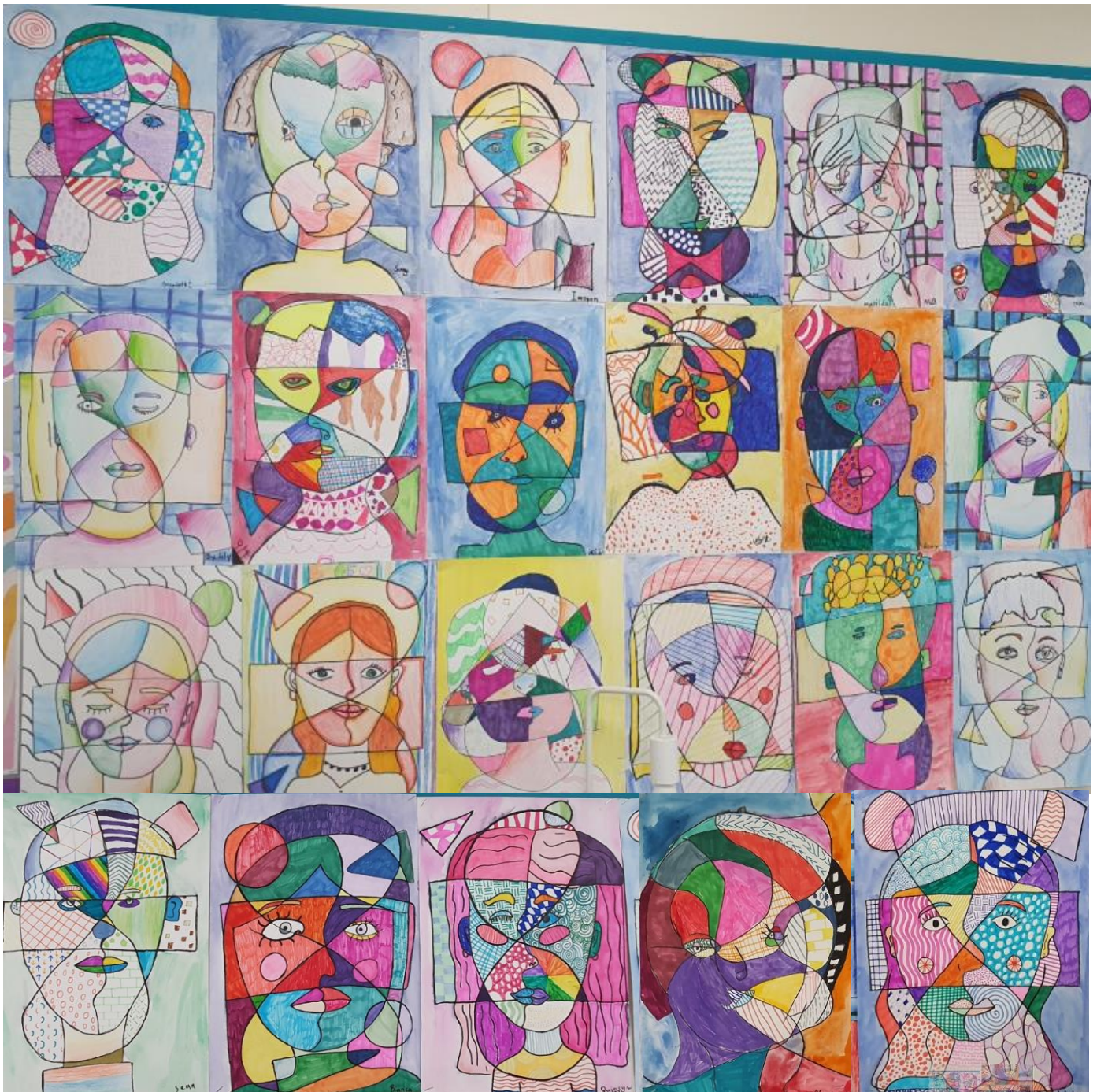


6/7 Art

In 6/7 B we have been learning about Pablo Picasso and Cubism by exploring how to use **line**, **colour**, and **shape** to create abstract portraits. We are also learning about the proportions of the face and how artists can change them for effect.

We can:

- Explain who Pablo Picasso was and describe the key features of Cubism.
- Identify the proportions of a human face and show them in our artwork.
- Experiment with line, colour, and shape to create an abstract portrait in the style of Pablo Picasso.



SENIOR SCHOOL NEWS

As the end of Semester 1 approaches, I need to acknowledge the exceptional resilience demonstrated by senior school students this year, despite a challenging period for many.

With the first semester ending at the end of week 8, this is a busy period with many out-of-school experiences and opportunities still to come. Students are encouraged to stay organised, manage their time effectively, and keep on top of their assessments to ensure successful completion of the semester's requirements.

I am hoping families have found Day Map useful for tracking their child's results and staying informed about their progress. Ongoing communication and engagement from home play a vital role in supporting every student's learning journey.

As always, the priority remains to uphold high expectations for all students, both in academic work and behaviour. These standards are essential in fostering a positive and productive learning environment where everyone is encouraged to achieve their best. It is also essential for families to be familiar with the school's assessment deadline policy. Students are aware of this policy, and it plays a critical role in ensuring all work is submitted on time and learning outcomes are met. Likewise, strong attendance and punctuality remain the key indicators of student success. Together, let's continue to prioritise a positive, supportive learning environment where every student is given the best opportunity to succeed.

Regards
Karen Box,
Senior School Coordinator

COMMUNITY NEWS AND EVENTS

27TH MAY RECONCILIATION ELDERS DAY

A gathering to connect, reflect and share our stories on the journey toward reconciliation.

Beginning at
Streaky Bay Children Centre
10:00am – 11:00am

For morning tea, welcome to country and flag raising ceremony followed by lunch and a yarn at

Calpatanna Waterhole
12:00pm – 2:00pm

Please RSVP by
15th of May
Tayla 0438 395 514

#NRW2026

NATIONAL RECONCILIATION WEEK 2026

27 MAY – 3 JUNE



ALL IN
FOR RECONCILIATION



Tuning in to Teens

**A free 6 session workshop for
parents, grandparents and carers
of young people aged 12-18**

The program provides parents with a greater understanding of their teen's emotional experiences. It also explores specific skills that help parents be supportive, empathic and stay connected with their teens.

Learn more about:

- emotion coaching
- understanding teenage development
- supporting teens to manage difficult emotions
- promoting positive behaviour
- supporting teens to maintain friendships and deal with conflict

When
5 – 7pm on following days:

Session 1 – 12th May 2026
Session 2 – 19th May 2026
Session 3 – 26th May 2026
Session 4 – 2nd June 2026
Session 5 – 9th June 2026
Session 6 – 16th June 2026

NOTE: attendance to all workshops is strongly encouraged

Where
headspace Port Lincoln
OR online via Teams

More information
hsplReception@youturn.org.au
(08) 7081 3616

Register



Facilitators

Tahlia Lee
headspace
Centre Manager

Olivia Britcher
headspace
Clinical Lead



RYPEN

Rotary
District 9510



Rotary Youth
Program of Enrichment

ROTARY YOUTH PROGRAM OF ENRICHMENT (2026)

For young people, aged 14-17

RYPEN is a three-day residential program of enrichment for young people aged 14 to 17 organised by Rotary District 9510.

The program aims to provide opportunities for young people to develop important life-skills, and to assist them to progress their communication and leadership skills through a range of formal and informal activities.



Activities & Personal Development

Participants take part in a range of activities including:

- Ice-breakers
- Discussion forums
- Teamwork
- Comedy skits
- Workshops
- Problem-solving Skills
- Small group work
- Physical challenges
- Goal setting

Experienced young facilitators will support and encourage participants in the program to develop their:

- Public speaking skills
- Teamwork
- Self-care and resilience
- Problem-solving Skills
- Communication skills
- Goal setting

RYPEN'S focus is on assisting young people to become active and valuable members of society, and to develop their abilities as potential leaders, especially for those that are looking for the right opportunity and encouragement to start their leadership journey.



For Youth Workers

We invite you to identify and encourage young people who would benefit from developing confidence, leadership, and interpersonal skills. This program is particularly suited to young people who show potential but may not yet have had the opportunity to step into leadership roles.

Please direct interested young people to apply via the website RYPEN9510.org, or contact us for guidance on suitable candidates.

Details in Brief

- **When / Where:** RYPEN is held at [Nunyara Conference Centre](#) between **Fri 03 and Sun 05 July 2026**.
- **Eligibility:** Any young person aged 14-17
- **Application Deadline:** **Monday 01 June 2026**.
- **RYPEN costs:** Around \$425, but **all young people will attend at no cost**, fully sponsored by Rotary.
- **Rotary involvement:** Based on each applicant's registration details, a local Rotary Club will sponsor the participant directly. The club may contact the applicant and ask to interview them (+ provide more information).
- **Child Protection:** RYPEN facilitators are aged between 19 and 24, have attended Rotary leadership training, have their Working With Children Check (WWCC) and have been vetted for suitability by Rotary.
- **For more information, email Caroline at:** rypen@rotary9510.org



FOR MORE INFORMATION AND TO APPLY

RYPEN9510.ORG

Regional, Rural and Remote Home Care Workforce Support Program



The Regional, Rural and Remote Home Care Workforce Support Program is proudly being delivered collaboratively by:

- **Skills Generation**, a Queensland-based Registered Training Organisation
- **Skills Hubs**, a workforce development not-for-profit
- In partnership with the **Australian Catholic University** across eligible regions in Queensland, New South Wales, South Australia and Western Australia. (See map overleaf)

Ageing Australia is delivering in VIC and TAS, and CREST in the NT.

This is a three year program (2025-28)



Funded by the Commonwealth Government, this Program aims to:



Attract

Raise the profile of aged care workforce opportunities in your local region to unlock existing potential



Train

Match candidates to accessible training pathways or identify training gaps and co-design solutions



Retain

Work with employers to strengthen organisational capacity and processes to increase staff retention



Support

Engage the holistic community discussion to recognise and grow the key role local aged care workforces play in strong, sustainable local futures



Eligible Regions (by Statistical Area Three)

Queensland

- Outback - North and East
- Outback - South
- Charters Towers and South West
- AYR - Ingham
- Central Highlands
- Biloela
- Burnett

South Australia

- Outback - North and East
- Eyre Peninsula and South West
- Lower North
- Yorke Peninsula
- Murray and Mallee
- Limestone Coast

New South Wales

- Broken Hill and Far West
- Clarence Valley
- Kempsey - Nambucca
- Taree - Gloucester
- Great Lakes
- Southern Highlands

Western Australia

- Esperance
- Albany
- Manjimup
- Wheat Belt - South
- Wheat Belt - North
- Mid West
- Kimberley

Are you...

A local Aged Care Provider?

Looking for care staff or training?

Interested in a support role?

A local training provider in the sector?

A student looking to enter the industry?

Care about the future of your community?

A local community organisation?

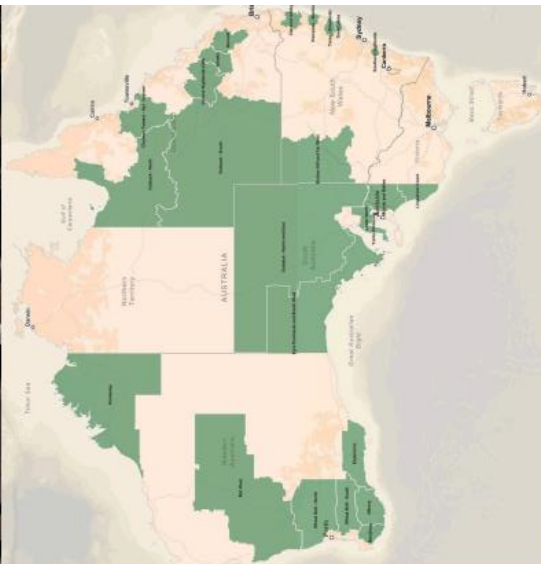
A disability service organisation?

Register your interest:



SCAN HERE

skills-hubs.com.au



Regional, Rural and Remote Home Care Workforce Support Program

1800 319 762

enquiries@skills-hubs.com.au

