

2025 annual report to the Community

# Paralowie School

Paralowie School number: 1099

Partnership: Orion



School principal:

Yvette Swaalf

Signature

Date of endorsement:

18/03/2026



Government  
of South Australia  
Department for Education

# Context Statement

Paralowie School caters for students from R-12. At the time of this report, the enrolment in 2025 is 1373. Paralowie School is classified as Category 3 on the Department for Education Index of Educational Disadvantage. At the time of this report, the school population includes 11% Aboriginal students, 11% students with disabilities, 21% students with English as an additional language or dialect (EALD) funded background, 2% children/young people in care. Further information about the school is available on the school's website (including its context statement), as well as the My School website.

Data Source: Department for Education data holdings from Mid census captured in AUGUST 2025.

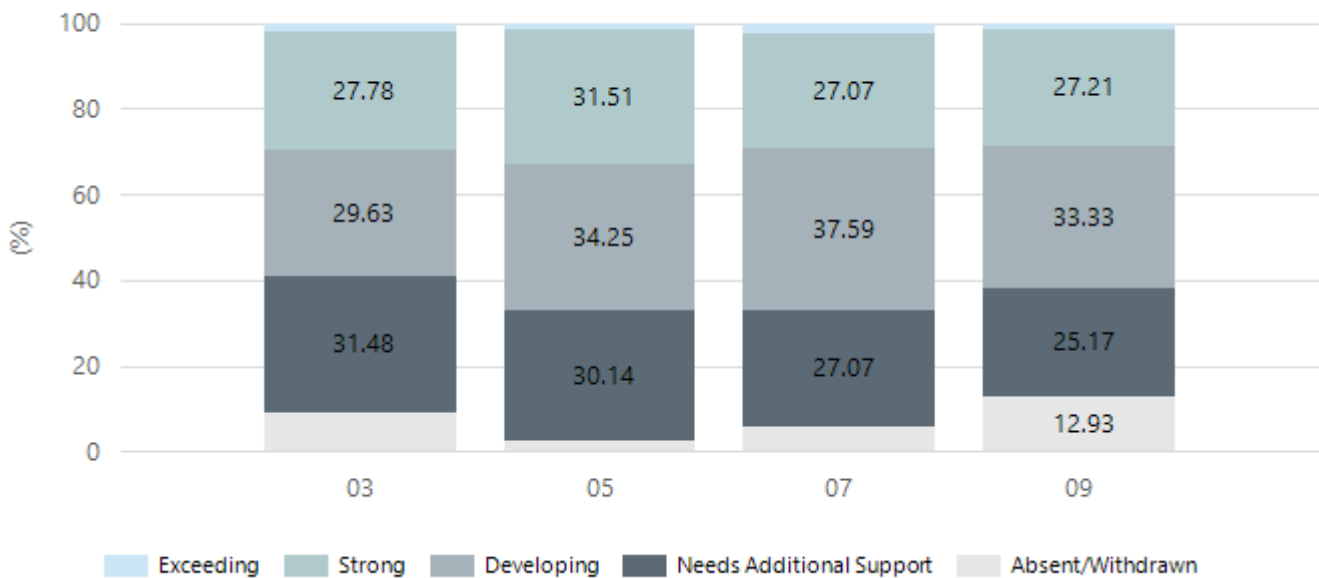
## Governing Council Report

### Performance Summary

#### NAPLAN Proficiency

In 2023 the Australian Curriculum, Assessment and Reporting Authority (ACARA) - a Commonwealth Independent statutory authority - announced changes to NAPLAN performance reporting. The new approach replaces the previous numerical NAPLAN bands and the national minimum standard.

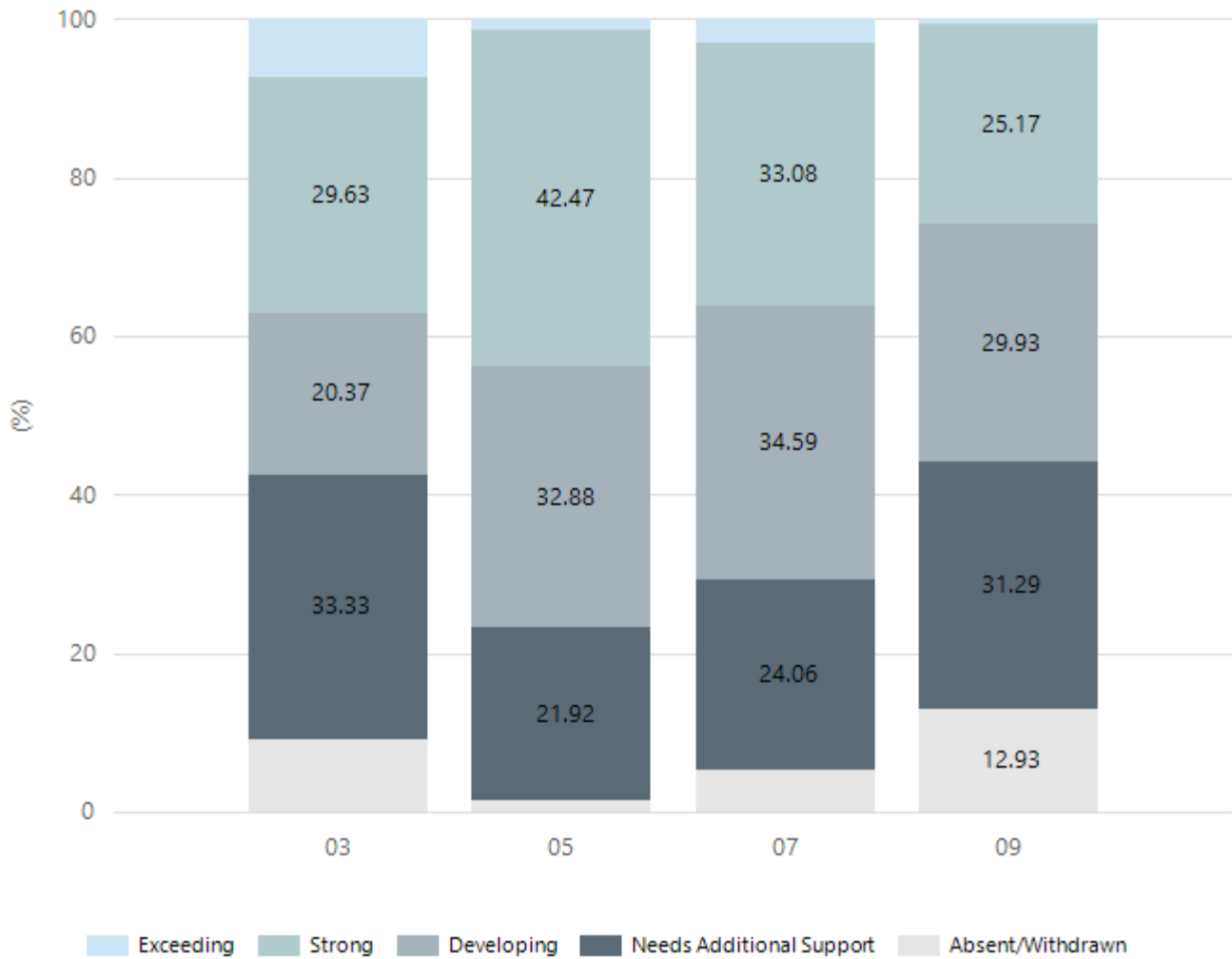
#### Numeracy



Year Level	03	05	07	09
Exceeding	1	1	3	2
Strong	15	23	36	40
Developing	16	25	50	49
Needs Additional Support	17	22	36	37
Absent/Withdrawn	5	2	8	19
Total	54	73	133	147

Data Source: Department for Education Assessment Data Holdings, 2025. If there are less than 6 students who sat NAPLAN in a school, no information will be shown. If a year level has less than 6 students, that year level will not be shown in NAPLAN results.

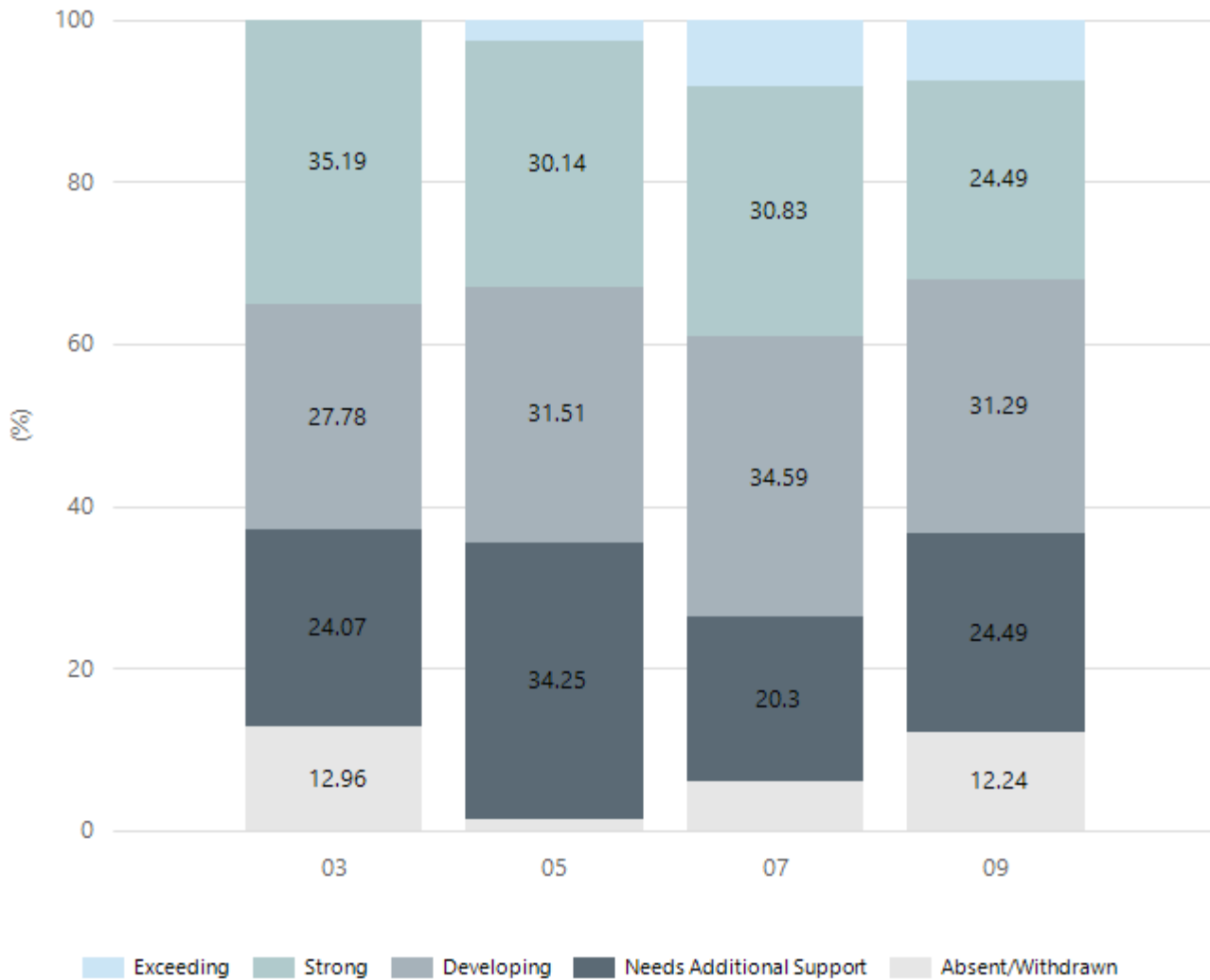
## Reading



Year Level	03	05	07	09
Exceeding	4	1	4	1
Strong	16	31	44	37
Developing	11	24	46	44
Needs Additional Support	18	16	32	46
Absent/Withdrawn	5	1	7	19
Total	54	73	133	147

Data Source: Department for Education Assessment Data Holdings, 2025. If there are less than 6 students who sat NAPLAN in a school, no information will be shown. If a year level has less than 6 students, that year level will not be shown in NAPLAN results.

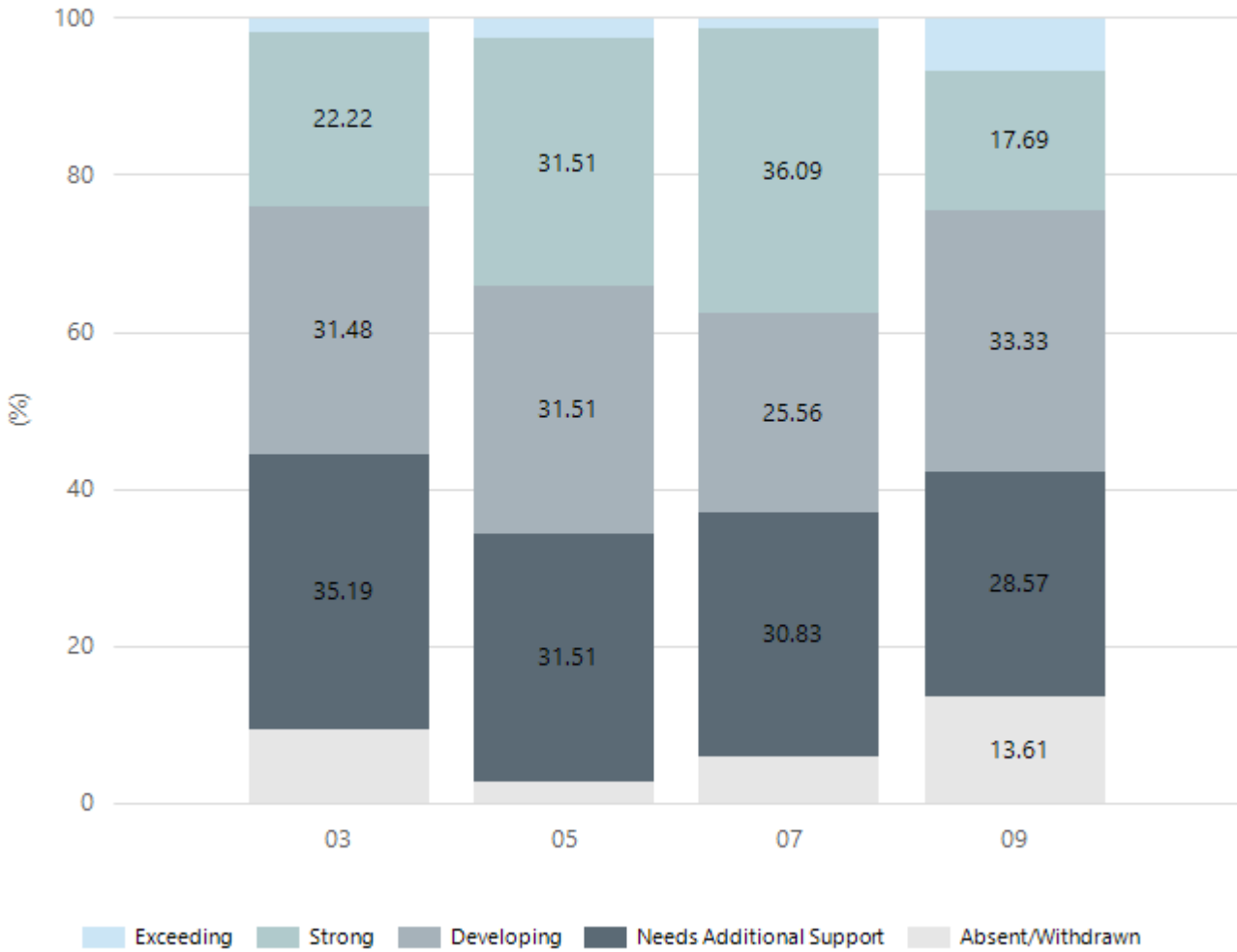
## Writing



Year Level	03	05	07	09
Exceeding		2	11	11
Strong	19	22	41	36
Developing	15	23	46	46
Needs Additional Support	13	25	27	36
Absent/Withdrawn	7	1	8	18
Total	54	73	133	147

Data Source: Department for Education Assessment Data Holdings, 2025. If there are less than 6 students who sat NAPLAN in a school, no information will be shown. If a year level has less than 6 students, that year level will not be shown in NAPLAN results.

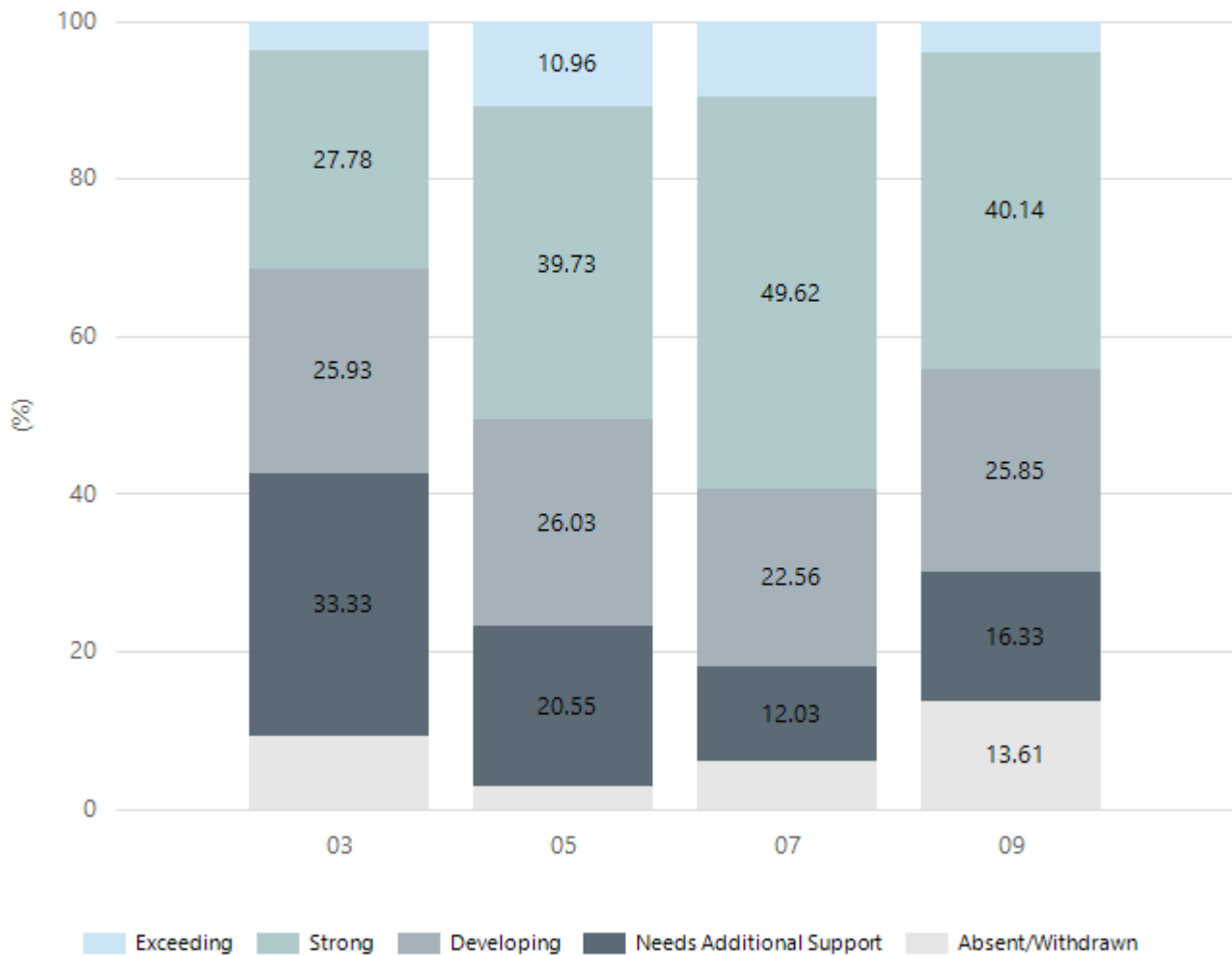
## Grammar



Year Level	03	05	07	09
Exceeding	1	2	2	10
Strong	12	23	48	26
Developing	17	23	34	49
Needs Additional Support	19	23	41	42
Absent/Withdrawn	5	2	8	20
Total	54	73	133	147

Data Source: Department for Education Assessment Data Holdings, 2025. If there are less than 6 students who sat NAPLAN in a school, no information will be shown. If a year level has less than 6 students, that year level will not be shown in NAPLAN results.

## Spelling



Year Level	03	05	07	09
Exceeding	2	8	13	6
Strong	15	29	66	59
Developing	14	19	30	38
Needs Additional Support	18	15	16	24
Absent/Withdrawn	5	2	8	20
Total	54	73	133	147

Data Source: Department for Education Assessment Data Holdings, 2025. If there are less than 6 students who sat NAPLAN in a school, no information will be shown. If a year level has less than 6 students, that year level will not be shown in NAPLAN results.

# NAPLAN Proficiency - Aboriginal Learners

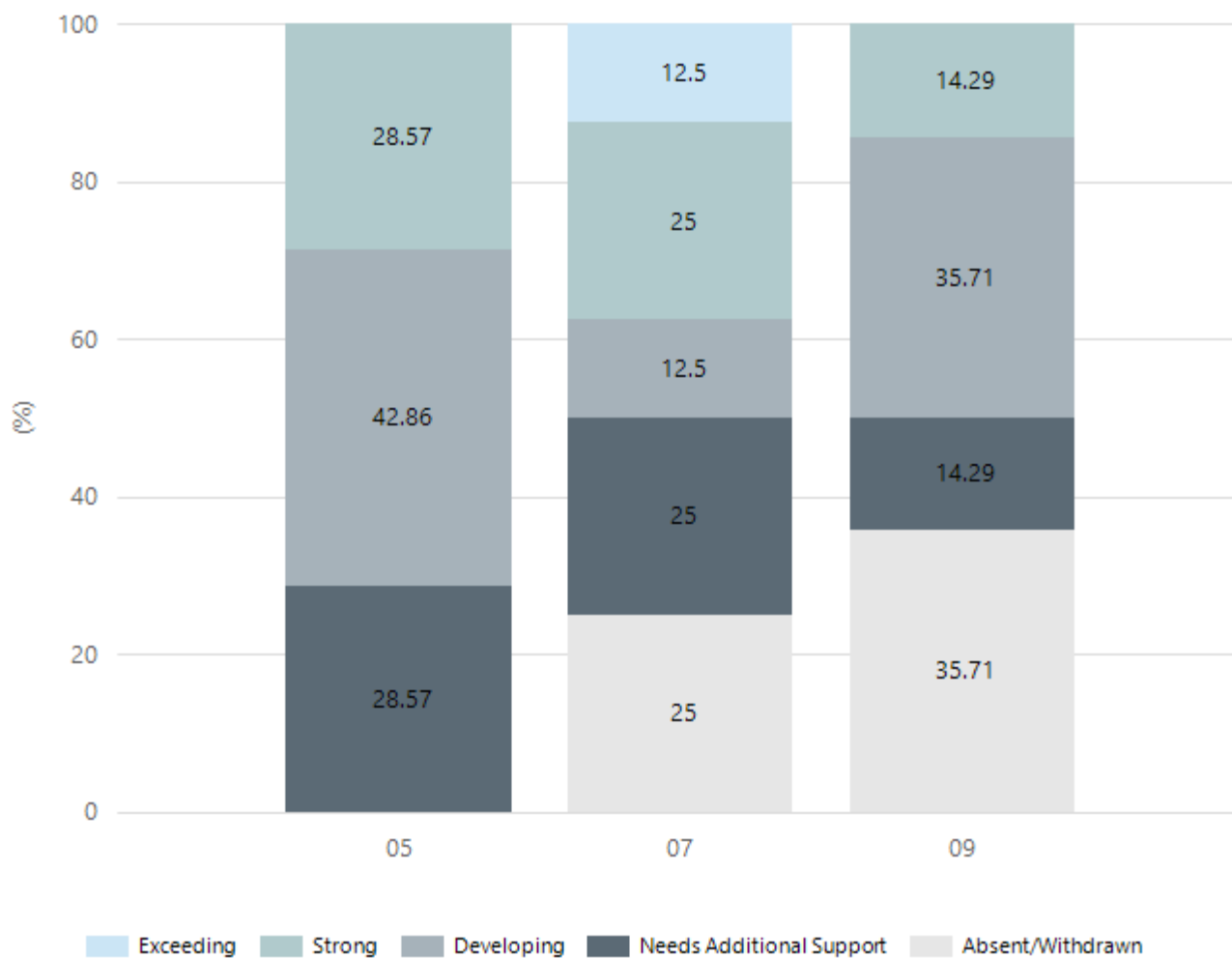
## Numeracy



Year Level	05	07	09
Strong	2	2	3
Developing	1	1	3
Needs Additional Support	4	3	5
Absent/Withdrawn		2	3
Total	7	8	14

Data Source: Department for Education Assessment Data Holdings, 2025. If there are less than 6 students who sat NAPLAN in a school, no information will be shown. If a year level has less than 6 students, that year level will not be shown in NAPLAN results. Only data for Aboriginal learners is displayed.

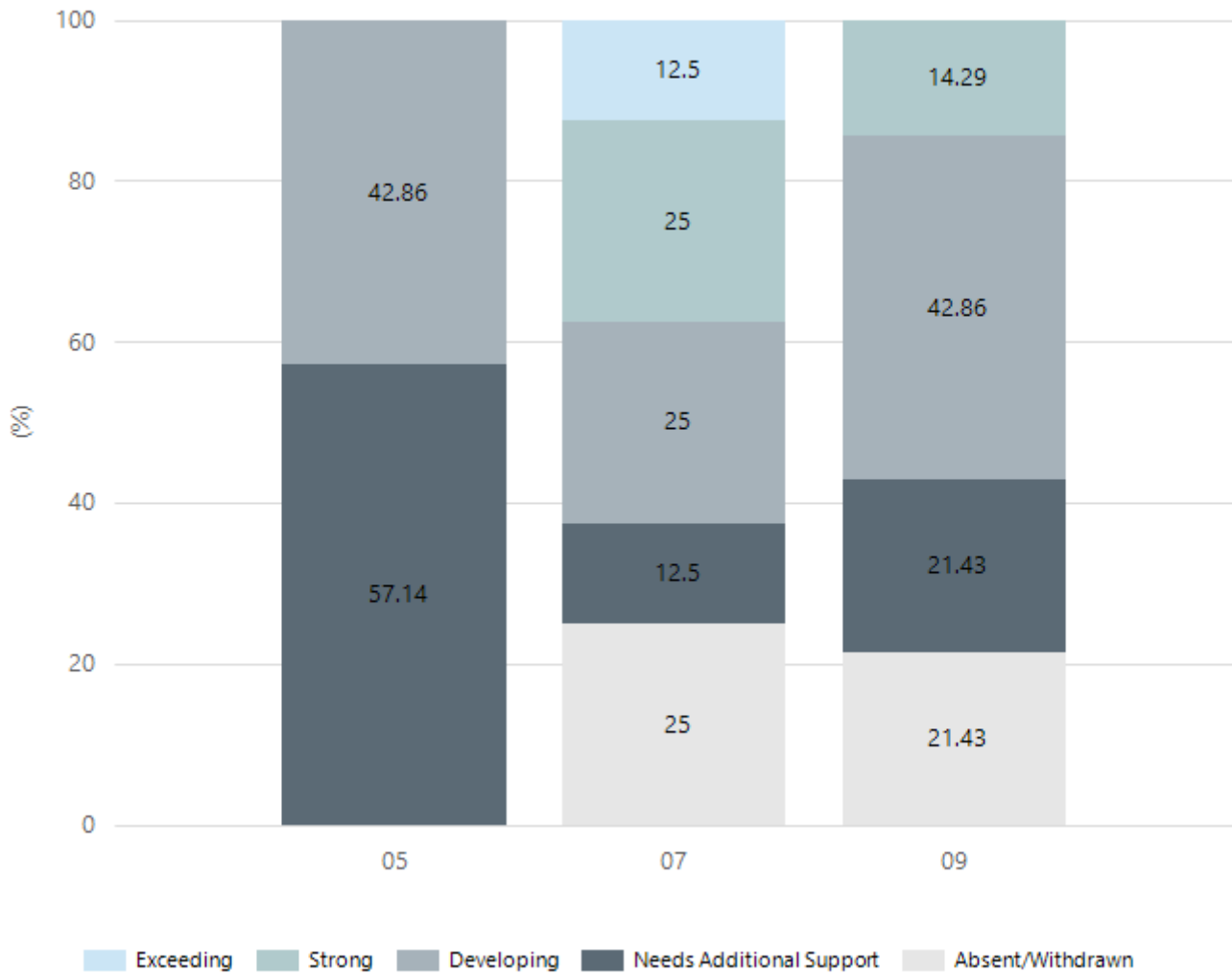
## Reading



Year Level	05	07	09
Exceeding		1	
Strong	2	2	2
Developing	3	1	5
Needs Additional Support	2	2	2
Absent/Withdrawn		2	5
Total	7	8	14

Data Source: Department for Education Assessment Data Holdings, 2025. If there are less than 6 students who sat NAPLAN in a school, no information will be shown. If a year level has less than 6 students, that year level will not be shown in NAPLAN results. Only data for Aboriginal learners is displayed.

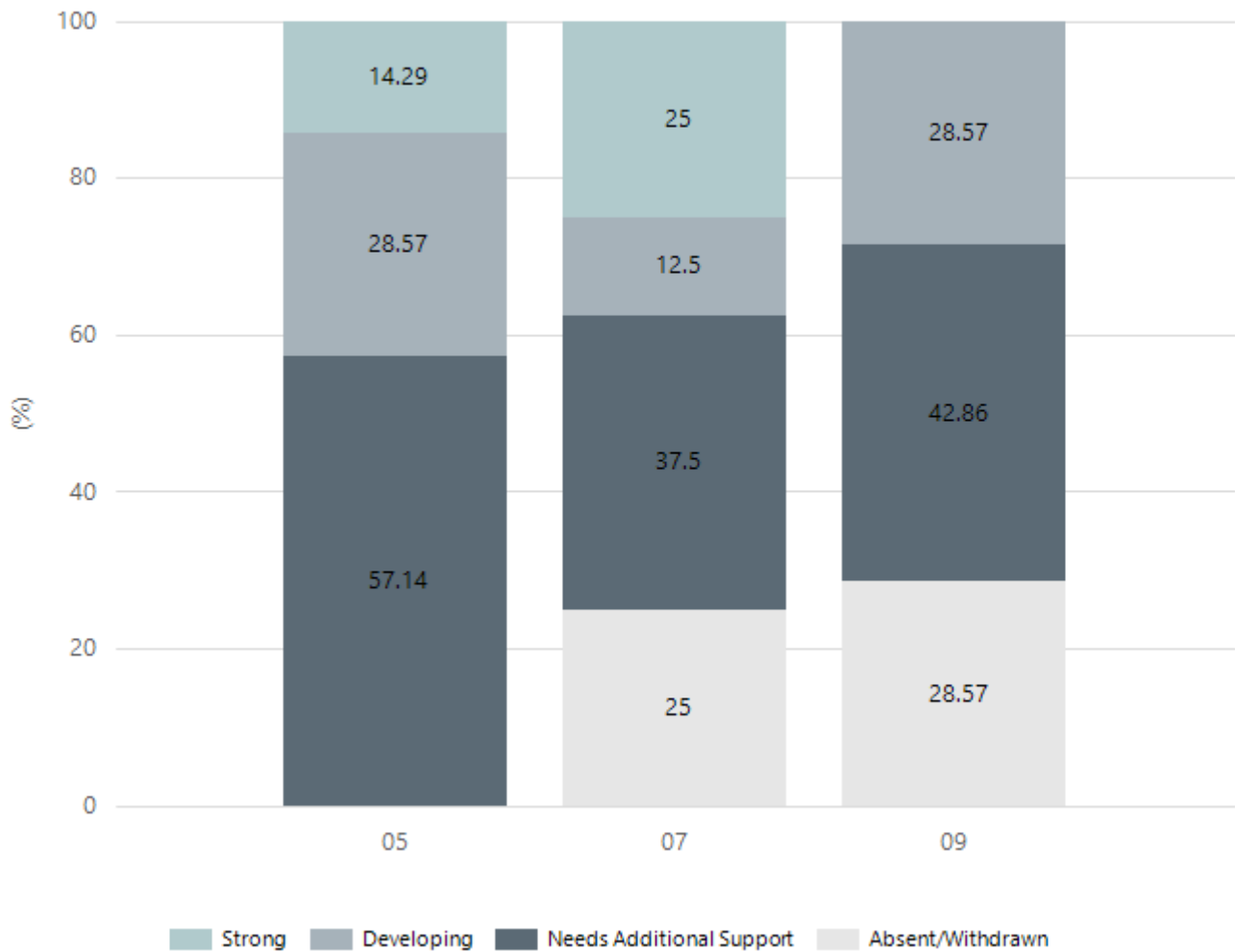
## Writing



Year Level	05	07	09
Exceeding		1	
Strong		2	2
Developing	3	2	6
Needs Additional Support	4	1	3
Absent/Withdrawn		2	3
Total	7	8	14

Data Source: Department for Education Assessment Data Holdings, 2025. If there are less than 6 students who sat NAPLAN in a school, no information will be shown. If a year level has less than 6 students, that year level will not be shown in NAPLAN results. Only data for Aboriginal learners is displayed.

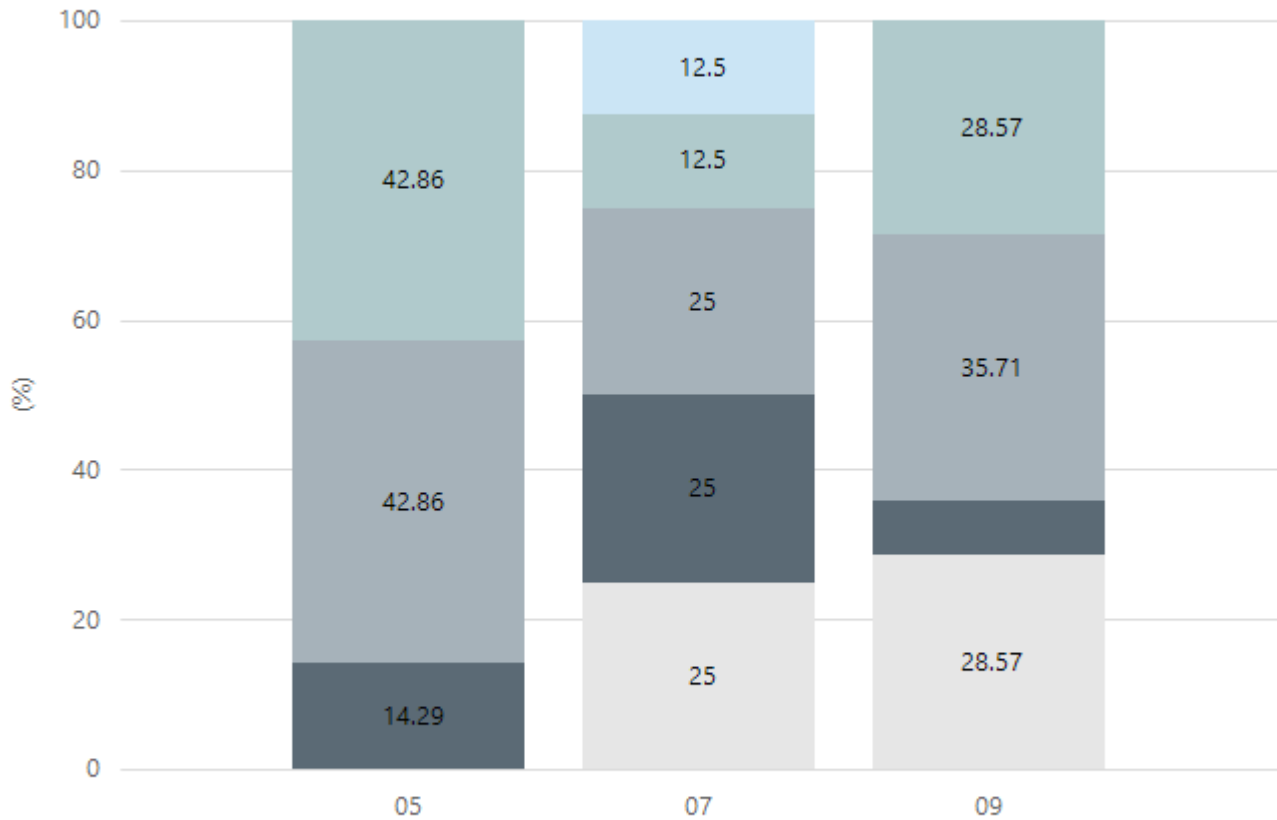
## Grammar



Year Level	05	07	09
Strong	1	2	
Developing	2	1	4
Needs Additional Support	4	3	6
Absent/Withdrawn		2	4
Total	7	8	14

Data Source: Department for Education Assessment Data Holdings, 2025. If there are less than 6 students who sat NAPLAN in a school, no information will be shown. If a year level has less than 6 students, that year level will not be shown in NAPLAN results. Only data for Aboriginal learners is displayed.

## Spelling



Exceeding Strong Developing Needs Additional Support Absent/Withdrawn

Year Level	05	07	09
Exceeding		1	
Strong	3	1	4
Developing	3	2	5
Needs Additional Support	1	2	1
Absent/Withdrawn		2	4
Total	7	8	14

Data Source: Department for Education Assessment Data Holdings, 2025. If there are less than 6 students who sat NAPLAN in a school, no information will be shown. If a year level has less than 6 students, that year level will not be shown in NAPLAN results. Only data for Aboriginal learners is displayed.

# South Australian Certificate of Education - SACE

## SACE Stage 2 Grades - Percentage of grades that are C- or above for attempted SACE subjects

2022	2023	2024	2025
98%	96%	97%	99%

Data Source: SACE School Data Reports, as of February 2025 for 2022-2025. When there are less than six students, no data is supplied. Due to rounding of percentages, total results may not add up to 100%.

## SACE Stage 2 Grade Distribution

Grade	2022	2023	2024	2025
A+	0%	0%	1%	1%
A	3%	3%	7%	7%
A-	7%	7%	12%	13%
B+	12%	9%	12%	16%
B	11%	14%	15%	19%
B-	17%	16%	14%	14%
C+	19%	16%	11%	13%
C	19%	21%	17%	14%
C-	11%	10%	8%	3%
D+	0%	1%	1%	1%
D	0%	0%	0%	0%
D-	0%	0%	0%	0%
E+	0%	0%	1%	0%
E	0%	1%	0%	0%
E-	0%	0%	0%	0%

Data Source: SACE School Data Reports, as of February 2025 for 2022-2025. When there are less than six students, no data is supplied. Due to rounding of percentages, total results may not add up to 100%.

## SACE Completion - Percentage of completers out of those students who had the potential to complete their SACE in October that year

2022	2023	2024	2025
100%	100%	99%	99%

Data Source: SACE School Data Reports, as of February 2025 for 2022-2025. When there are less than six students, no data is supplied. Due to rounding of percentages, total results may not add up to 100%.

## Year 12 Students undertaking Vocational or Trade Training (VET)

	2023	2024	2025
Percentage of Year 12 students undertaking Vocational Training or Trade Training			
Percentage of Year 12 students attaining a Year 12 certificate or equivalent VET qualification	30%	35%	38%

Data Source: School supplied data

## School Attendance

Year Level	2023	2024	2025
Reception	80.2%	89.0%	81.8%
Year 01	80.0%	90.1%	84.9%
Year 02	86.7%	84.5%	85.2%
Year 03	85.2%	91.4%	84.0%
Year 04	83.2%	91.8%	91.7%
Year 05	85.9%	93.6%	88.5%
Year 06	86.3%	93.4%	87.4%
Year 07	84.7%	84.4%	85.6%
Year 08	80.2%	80.8%	83.3%
Year 09	79.0%	81.1%	82.5%
Year 10	79.0%	78.6%	79.3%
Year 11	81.3%	82.9%	78.1%
Year 12	68.5%	72.8%	79.8%
Primary Other		54.4%	29.2%
Total	80.8%	83.4%	82.5%

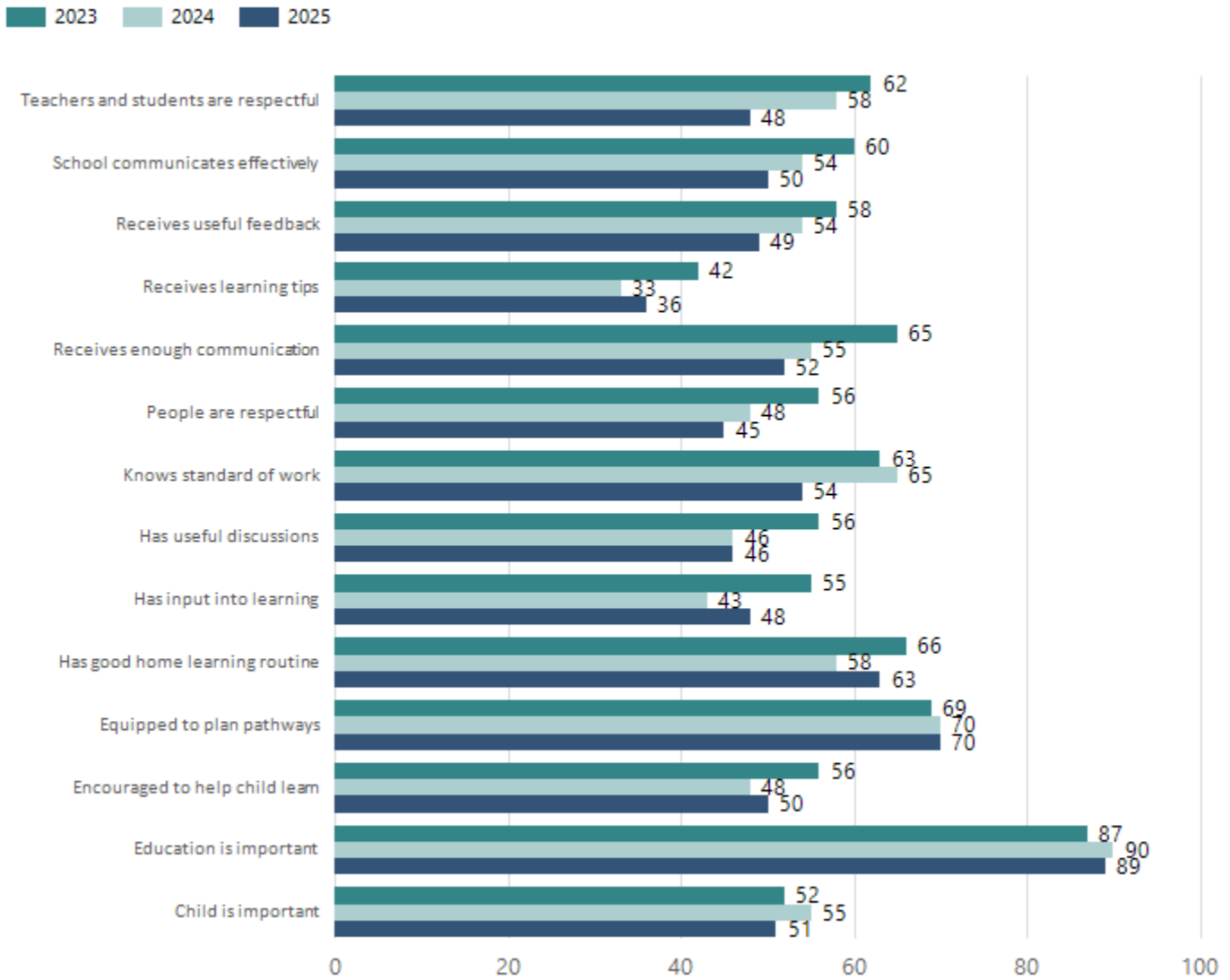
Data Source: Department for Education Attendance Data, Semester 1 Report 2025. A blank cell indicates there we no students enrolled. 'Primary Other' includes students enrolled in specialised education options. 'Secondary Other' includes students who have already spent a year at Year 12 and elected to undertake further study at Year 12.

## Attendance Comment

In South Australia, all children and young people must be in school from 6 years to 16 years old. They must attend a government or non-government school full time. From age 16 to 17 however, young people must attend school or an approved learning program (such as an apprenticeship, traineeship, accredited course or university). Schools and parents must encourage and support students to come to school every day. Parents and caregivers must make sure their child is enrolled in a school, and attends school all day and everyday it is open, unless a child is sick or has an approved exemption. Teachers and leaders actively follow up when a student misses school, including recording all absences and non-attendance. All schools in South Australia have local attendance procedures governed under the Education and Children's Services Regulations 2020.

# School Parent Opinion Survey Results

Proportion of agree/strongly agree response(%)



Data Source: 2025 Department for Education Parent Opinions Survey, Term 3 2025.

# Intended Destination

Leave Reason	Number	%
IS - INTERSTATE	16	7.0%
NG - ATTENDING NON-GOV SCHOOL IN SA	34	16.0%
TG - TRANSFERRED TO SA GOVERNMENT SCHOOL	82	38.0%
U - UNKNOWN	79	37.0%

Data Source: Department for Education Destination Data Report, 2025. Data extract term 3 2025. Data shows recorded destinations for students that left the school in the previous year. Data is uploaded by schools in term 3 and may not reflect final or total figures at time of report creation.

## Highest Qualifications held by the teaching workforce and workforce composition

All teachers at this school are qualified and registered with the SA Teachers Registration Board.

Qualification Level	Number of Qualifications
Bachelor's degrees or Diplomas	69
Postgraduate Qualifications	41

Data Source: Data extracted from Mandatory Workforce Information Collections as on the last pay date of June 2025. As self-reported by staff in the system.

Please note: Data includes staff who are Actively employed and on extended paid leave. Please note only the highest qualification of the Teaching staff is reported. Excludes any number of other certifications earned.

### Workforce composition including indigenous staff

	Non-Teaching Staff		Teaching Staff	
	Indigenous	Non-Indigenous	Indigenous	Non-Indigenous
Full-Time Equivalents	3.9	48.1	1.0	102.7
Persons	5.0	69.0	1.0	109.0

Data Source: Data extracted from Mandatory Workforce Information Collection as on the last pay date of June 2025.

Please note: Data includes staff who are actively employed and on extended paid leave. "Indigenous category" is self-reported by staff in the system.

## Financial Statement

Funding Source	Amount
Grants: State	\$23,800,527
Grants: Commonwealth	\$0
Parent Contributions	\$695,763
Fund Raising	\$4134
Other	\$131,093

Data Source: School supplied data.