



School Context Statement

Updated: March 2025

School number: 0511

School name: Basket Range Primary School

School Profile:

Established in 1885, Basket Range Primary School is a 25 minutes' drive from the Adelaide CBD. Located in a beautiful rural setting with sweeping views, the extensive grounds provide a safe, supportive and stimulating environment with rambling gardens, adventure and formal playgrounds and sports grounds.

Visitors to the school comment on the close, cooperative and supportive relationships that exist between students and staff. Our small class sizes enable our teaching staff to nurture a student's individuality and provide authentic learning experiences. There is much cross peer formal and informal teaching, tutoring, care and support. Basket Range is a tight knit school, where all students know and support each other.

At Basket Range Primary School, we are committed to fostering well-rounded individuals who are equipped to thrive in an ever-changing world. We embrace the holistic development of each child's academic, artistic, practical, social and emotional capabilities. We encourage our students to forge a deep connection with nature, fostering a sense of stewardship and a lifelong appreciation for the environment.

English empowers us to engage with language and literature in ways that enable us to think and act critically and to make sense of our worlds. By expressing ourselves orally, visually and in writing, we develop our creativity, understanding and love of language and texts.

Learners at Basket Range Primary School will develop the capacity to listen, read, analyse, and interpret while learning to communicate orally, visually and in writing. Studying English fosters an appreciation for the diversity of literature and helps create lives with rich local and global opportunities.

We use UFLI (University of Florida Literacy Institute) as an explicit and systematic program that supports our learners to develop the foundational skills necessary for proficient reading. We follow a carefully developed scope and sequence designed to ensure that our learners systematically acquire each skill needed and learn to apply them with automaticity and confidence in reading and writing.

Mathematics enriches our lives and expands our horizons as we notice, explore and describe the patterns and connections we see in our world. Mathematics empowers us to think critically and make informed decisions which help us thrive in our everyday lives. It helps us innovate, continuously shaping our futures, turning problems into opportunities, and discovering the possibilities of the unknown that will sustain and change our world.

Learners at Basket Range Primary School will experience mathematical ideas with a variety of concrete materials for them to manipulate, discover, visualise and comprehend different mathematical concepts while making connections to their current understandings. Bond Blocks is a differentiated resources we use as an evidenced-based methodology to support our learners with a concrete-representational-abstract approach to learning mathematical concepts around measurement, spatial awareness and number.

Connecting with environment has always been important at Basket Range Primary School. In 2025 we will be collaborating with Arbury Park Outdoor School to enhance the development of the following dispositions

- learn about environmental responsibility
- develop empathy and understanding for the natural world
- learn how individuals can be reflective and resourceful ensuring a more sustainable future
- develop resilience and foster collaborative relationships
- foster curiosity and appreciation for the natural world and inspire meaningful learning

Children will have the chance to explore and connect with nature, deepening their understanding of ecosystems and environmental sustainability in this beautiful local setting. Bird ecology, plant propagation and Aboriginal cultural studies are just some of the captivating areas of focus that will be explored. These experiences will not only foster curiosity and appreciation for the natural world but also inspire meaningful learning that will continue back at school.

Students from R-6 participate in engaging, French, music and creative arts and lessons.

Extensive involvement in a wide range of learning opportunities ensures a varied and enriched curriculum. These include our afternoon programs in Design Technology, Gardening, Science, Arts, Health and PE. Our students are also involved in cooking classes, excursions, camps, cluster school activities and participation in various competitions and events e.g. The Premier's Reading and Be Active Challenges as well as Oliphant Science awards and local community competitions.

1. General information

- School Principal name: Christie Evans
- Year of opening: 1885
- Postal Address: 16 Cramond Road, Basket Range 5138
- Location Address: 16 Cramond Road, Basket Range 5138
- DECD Region: Adelaide Hills
- Geographical location – road distance from GPO (km): 20 kms
- Telephone number: 8390 3466
- School website address: www.basketrangeprimaryschool.com.au
- School e-mail address: dl.0511_info@schools.sa.edu.au
- Child Parent Centre (CPC) attached: NO
- Out of School Hours Care (OSHC) service: Shared with Norton Summit Primary School
- February FTE student enrolment:

Year	Number of students enrolled
2024	17
2023	17
2022	23

2021	49
2020	52
2019	50

- Student enrolment trends: Numbers have fluctuated over the last few years with an enrolment from 17-52 students. There are currently no Non-English Speaking Background enrolments and no Aboriginal or Torres Strait Islander (ATSI) student enrolments.
- Staffing numbers: (as at February census): A staff of 7, comprising 1 Principal, 2 teachers and 3 SSO staff, as well as a grounds person. Total teaching staff allocation is 1.8 FTE. Ancillary hours total 53 hours/week.
- Public transport access: The nearest bus route is the Hills Transit Adelaide via Greenhill Road at Uraidla.
- Special site arrangements: Monday to Friday (R-2) Class sizes are below average: 10.
- Basket Range works closely with a number of other sites; 3 Schools and a Kindy, comprising of Basket Range, Uraidla, Lenswood, Norton Summit Primary Schools and Uraidla & Hills community Kindy. Basket Range also shares professional learning opportunities with the Mt Lofty Partnership; Lenswood PS, Uraidla PS, Arbury Park and Norton Summit PS.

2. Students (and their welfare)

- **General characteristics**

The current student profile includes students from families with rural and professional lifestyles.

- **Student support offered**

SSO support for 31 hours per week working with students. Bond Blocks allows for Maths intervention in small groups.

- **Student management**

Behaviour education is fair and consistent. All BRPS teachers and SSOs support students to develop skills in negotiation, to follow logical consequences and to be proactive.

Behaviour Education is based on educative and positive psychology responses, logical consequences and responsible counselling. Consistent approaches to Behaviour Education across all year levels and classes are in place.

Self-discipline, independence and a positive self-image are nurtured through a safe and stimulating environment.

Our Behaviour Education policy includes students and teachers and parents in the development and implementation of individual student plans.

- **Multi-age Learning Environments**

We frequently embrace the unique benefits of multi-age learning experiences. This fosters a strong sense of community, with older students acting as mentors and role models while younger students bring fresh and vibrant perspectives. Learning experiences are thoughtfully designed to ensure all students are engaged, supported and appropriately extended. Multi-age classrooms encourage collaboration, peer learning, and the development of social-emotional skills, creating a rich and inclusive environment where every student can flourish.

- **Student agency**

Student involvement in decision making and leadership is a strong feature of Basket Range. Students are explicitly taught skills that enable them to participate in making effective decisions that affect their environment and their learning. There are many opportunities for students to suggest and direct changes for their benefit as well as the benefit of others. This is achieved through planned whole school meetings. The students lead, manage and support in specific areas such as Outdoor Learning, Library, and Grounds as well as organise and run events such as Wheels Day.

- **Special programmes**

Students are involved in local environmentally sustainable programs. There is a focus on environmental sustainability formalised by the school's Kitchen Garden program. We have a revegetation area and frog pond and liaise closely with Landcare community groups. Students maintain several vegetable gardens and use produce in a well-equipped kitchen for regular cooking sessions.

All students participate in music have the opportunity to use and perform on the school's unique outdoor musical playground.

3. Key School Policies

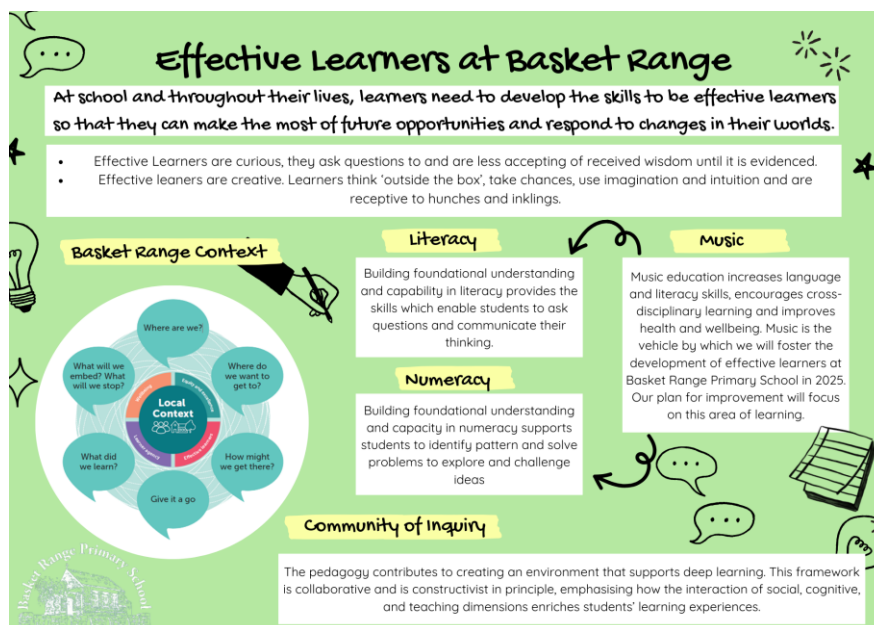
Vision statement:

BRPS school community is committed to creating a supportive environment that develops the whole child.

We strive to ensure that every child has a sense of wellbeing that will support them to be happy, creative, and inclusive learners.

Our school motto, small school confident children, reflects our vision of working within an intimate and inclusive school community to develop all children to be confident and capable.

Site Learning Plan



4. Curriculum

Subject offerings:

The school provides a focus on both academic and social development through class and environmental learning experiences in English, Mathematics, the Arts, Science, Technology, French, Geography, History, and Health & Physical Education. All students are offered a rich and balanced curriculum. We value teaching methodologies that provide for student wellbeing, explicit instruction, cater for a broad range of learning styles and challenge students.

Inclusivity and special needs

Students with learning disabilities are supported in a 1:1 situation with SSOs when applicable. School data is used to identify students who would benefit from additional support. These students work with SSOs and volunteers who are trained in intervention support methodologies and the Bond Blocks maths intervention program.

Special curriculum features

Our school community values literacy and numeracy skills as essential for successful futures. The Head, Heart and Hands methodology is embraced and supports the students' academic and SEL development. In the afternoon children participate in specialist programs which consist of class and environmental learning experiences in the Arts, French and the Kitchen Garden program.

Teaching methodology

Student developmental needs and engagement is the focus of our work. All students are expected to achieve at their highest level, regardless of their age, year level or peer expectations. Individual learning plans are put in place where possible to encourage the pursuit of excellence with the greatest chance of success.

We prioritize rich, practical experiences that encourage creativity, collaboration and curiosity. We especially embrace low-tech learning opportunities in the early years to foster meaningful connections and engagement. We also recognize the importance of digital literacy and ICT skills as students' progress into middle and upper primary years. This balanced approach reflects our shared commitment to nurturing well-rounded learners.

Community of Inquiry (COI) is a dynamic learning approach that encourages explorative thinking and meaningful collaboration. It provides children with a supportive, non-competitive space to share their knowledge, beliefs, and ideas on a variety of topics. Through COI, students can address misconceptions, build a sense of community, and deepen their understanding of concepts in real-world contexts. This approach not only fosters curiosity but also inspires independent and collaborative research, making it a valuable tool for exploring student thinking and guiding learning throughout their educational journey.

Student assessment procedures and reporting

Assessment and reporting incorporate observation, student self-evaluation, reflection and goal setting and work that is shared regularly with parents in learning discussions and showcase assemblies when applicable. Assessment and reporting also includes ongoing teacher feedback and student work samples. Two formal written reports are written by classroom teachers. Standardised testing is done at pre-determined points throughout the year and this information is used, in conjunction with NAPLAN results, to inform curriculum planning and to identify students who would benefit from additional support.

Working with other schools

Basket Range Primary School works collaboratively with other small Adelaide Hills schools. We work with our local cluster: Uraidla Primary, Norton Summit Primary and Lenswood Primary Schools. Within this cluster we share professional learning of staff and parents as well as across school student and community activities. The opportunity to network with these schools provides our teachers and students with many invaluable experiences and a broadened curriculum and professional learning base.

5. Sporting Activities

Students participate actively in the annual Combined Small Schools Sports Day, Hills Lightning Carnival and a variety of clinics offered at the school. Basket Range offers specialised coaching in a sport each term with the support of Sporting Schools SA.

6. Other Co-Curricular Activities

Music: Our outdoor musical instruments are a highlight of our school. This unique program is open to all students from Reception to Year 6. In 2025, our teachers have the opportunity of working with staff from the Music Education Strategy to enrich and enhance the school's music program. This partnership fosters creativity, deepens musical understanding, and provides an engaging and high-quality learning experience for all.

All students participate in the Premier's Reading and Be ACTIVE Challenge each year.

Other co-curricular activities include: lunchtime activities, gardening and community led incursions and events.

7. Staff

Staff profile

Principal

Teaching staff 1.8

Student Support Staff 3

Groundsman 1

Leadership structure

Because of the small number of staff, collaborative decision-making structures are promoted and implemented.

Staff support systems

Staff work collaboratively for whole school planning and programming. Shared professional learning is aligned with our Site Improvement Plan (SIP). Staff wishing to undertake leadership positions or step 9 are encouraged and supported.

Performance Management

There are regular performance management meetings, incorporating whole school curriculum priorities. Performance management conversations are seen as an opportunity for professional dialogue. Teaching and ancillary staff members meet regularly with the principal. Discussions focus on student support, professional learning, career planning and implementation of the Site Improvement Plan.

Staff utilisation policies

Access to special staff for Music and Languages are provided as specialist areas. Access to support for staff is through the Employee Assistance Program (EAP).

8. School Facilities

Buildings and grounds

The school has five well equipped classrooms, resource centre, staff room, well equipped student kitchen, art room and music / resource room. The local hall (adjoining the school) is used for large assemblies, End of Year Concert and indoor activities. The Basket Range Oval is also used for sporting events. The grounds are quite extensive, with grassed play areas, an asphalt playground, an adventure playground and a garden play area under old pine and eucalypt trees.

Heating and cooling

All teaching areas are reverse cycle air conditioned.

Specialist facilities and equipment

Wireless networking throughout the school, Interactive televisions in the mainstream and music teaching space.

Our small but well stocked library is supplemented by the Adelaide Hills Council Mobile Library which visits fortnightly.

We value sports education and have excellent resources for teacher and student use.

Our unique outdoor musical instruments are a feature of our school and our music room is well stock with numerous instruments.

Student facilities

There is a student kitchen, adventure playground, a covered outdoor learning area, outdoor musical instruments and excellent sporting equipment.

Staff facilities

Classroom teachers can access laptop for personal use.

Access for students and staff with disabilities

There is wheelchair access to most facilities and a unisex disabled toilet. Modifications are made to accommodate any special needs.

Access to bus transport

The nearest access to bus transport to Adelaide and to Stirling is via Greenhill Road. Private transport is used for excursions in a nearby radius to the school while a contractor is engaged for school excursions further afield.

9. School Operations

Decision making structures

Consensus is the preferred model of decision making within the school. Staff and Governing Council meetings are held regularly and these bodies are consulted in the decision-making process.

Regular publications

A newsletter is published 3 times a term which is share with school families via email. A comprehensive parent information booklet (which includes policy statements) is available and distributed to families as they start with Basket Range. Policy updates etc are distributed on a needs basis. These documents are also available on the school's website which is regularly updated and linked to our Facebook page.

School finances

The school has a financial officer who works closely with the principal and treasurer from the Governing Council. Fundraising supplements the usual sources of school funding. Recent spending areas have been focussed on curriculum resources and developing students' stretch and challenge through incursions, excursions and community events.

10. Local Community

General characteristics

The school is an integral part of the local community which has a strong sense of history and tradition. Parents are actively involved in the school and support the teaching and learning programs.

Parent and community involvement

There is a strong community involvement in the school. The school welcomes the expertise from a range of parents who share their knowledge of garden, science, art, cooking, craft and more.

Feeder or destination schools

The local kindergarten (Uraidla & Hills Community). Exiting students generally proceed to Heathfield High School, Glenunga International High School, Marryatville High School, Norwood Morialta High School, Urrbrae Agricultural High School, Oakbank Area School, Mount Barker Waldorf School or private schools.

Other local care and educational facilities

Out of School Hours Care is shared with Norton Summit Primary School. Medical practices are situated in Uraidla and Norton Summit.

Commercial/industrial and shopping facilities

There a growing local shopping facilities at Uraidla and Summertown with more extensive shopping available in Stirling or Magill.

Other local facilities

There are a number of active sporting and cultural groups with good recreational facilities available within the local area. Please see the Adelaide Council for further information. The Adelaide Hills Council has a Mobile Library Service which visits the school on a fortnightly basis.

Local Government body

Adelaide Hills City Council: Tel 8408 0400