

Vacation Care

Monday - Friday
7:00am - 6:00pm

Contact Information

Address: 7 Risely Avenue, Royal Park, 5014
Mobile Number: 0411 138 945
E-mail: hendon.oshc490@schools.sa.edu.au

Please note Updated Fees

School age: \$78.00
Preschool age: \$83.00

Vacation Care Booking Dates

Bookings open on **Wednesday, 5th November** for preschool & school-aged children
Bookings close on **Wednesday, 19th November** Any bookings received after this date may not be processed and waitlists may apply.

All bookings will be confirmed via email by Friday, 28th November.

Risk Assessment - Individual risk assessments are placed and reviewed for all individual excursions and any other individual activities where potential risk might be present. All risk assessments are available at the service.

Transportation - Grant's coachlines, unless otherwise specified. Buses are fitted with seatbelts.

To Book In

Enrolment forms are available at OSHC or via SPIKE. Each child attending the OSHC program needs their **own booking form**.

Forms can be returned via email or in person and must be signed to be valid.
If you are eligible for CCS you must register with Centrelink prior to enrolling in our program. Please ensure you go to MyGov complete all tasks, including accepting care at Hendon OSHC and accept the service if new or when you have not used the program for 13 weeks or more.

What to do

Return signed form
via email or in
person.
Note arrival times

What to bring:

Snacks
Lunch (that doesn't
require heating)
-Drink bottle
-Enclosed shoes

Please note

Due to allergies,
foods containing
nuts are not to be
brought to OSHC.



IMPORTANT INFORMATION

- Children will be unable to attend OSHC/Vacation Care if fees/accounts exceed \$100 at the time of care or bookings.
- Please note that we have clear regulations regarding ratios and, if required, the DfE priority of access guidelines will be actioned.
- Care needs to be cancelled 7 days prior to the booked session, for cancellation with no charge.
- If cancelling after this time, full payment will be required for days booked.
- Children need to wear sun-smart clothing that covers their shoulders and back. Shoes need to be toe-enclosed footwear. For their own well-being, children may have restricted play if their attire is not suitable.
- Late pick up fees apply (6.01 - 6:16pm = \$15 & 6:17 - 6:31pm = \$30)

*MERRY
Christmas!*



*HELL
Summer* ★★



Where do our program ideas come from?



You may be wondering how we come up with new and exciting activities to create an engaging Vacation Care program each school holidays. Well, there are many sources in which we gain our ideas from, these include brainstorming at group times with children and educators, proposals from children, and extensions from children's learning observations. We also plan around celebrations, children's interests, ability to support local companies and organisations such as the Odeon Cinema at Semaphore, Local Thrift Project, and the grants for special event days given to us by Variety the Children's Charity S.A.

For more information about our program terminology, see the table below.

Code	Explanation
L.O.	L.O. stands for learning outcome/s. Each of the programmed activities have learning outcomes which they relate to. These learning outcomes come from the National Quality Framework approved learning frameworks. These include the Early Years Learning Framework (EYLF), for children 5 years of age or younger, and My Time, Our Place Framework (MTOP), for school aged children. For more information on these frameworks, please follow the links below. EYLF - EYLF-2022-V2.0.pdf (acecqa.gov.au) MTOP - MTOP-V2.0.pdf (acecqa.gov.au)
Extension or Ext	Ext is short for extension. When the program says 'ext' or 'extension', it means that the program activity is an extension of a learning observation completed by educators for children. Next to extension is the child/ren's initials who were involved in the original learning observation, and the extension will therefore be applicable to them.
Proposal Winner	Proposal winner refers to children who have come up with an idea for vacation care and they have come up with a proposal and written it up and given it to Ali (Director). Each child is offered the opportunity to put forward proposals each school holidays. Submitted proposals are then read and reviewed by OSHC staff and suitable proposals for the program are selected and programmed into the respective vacation care program.
Family Input	'Family Input' highlights ideas and suggestions that have come straight from you! Suggestions are collected through surveys, conversations and communications such as seesaw. Advisory and Governing Council are also able to contribute to program ideas.

WEEK 1 HOLIDAY PROGRAM



Monday

15th December

Excursion

Glitter Pines Immersive Christmas Experience



We will be walking to and from the venue at Hendon.

Arrive by: 9:30am

Return: 11:30am

Extra Activities:

- Letter's to Santa
- Decorate OSHC for Christmas

L.O. 1, 2, 4, 5

Tuesday

16th December

Theme Day

OSHC Shop KK



Activities will include:

- Get to know you game
- Shopping for KK presents for each other from our OSHC Shop products (plus some new extras)

L.O. 1, 2, 4, 5

Wednesday

17th December

Theme Day

Christmas Cooking and plate decorating



Activities will include:

- Christmas cooking,
- Plate decorating

L.O. 1, 2, 4, 5

Thursday

18th December

Theme Day

Variety the Children's Charity's Checklist to Christmas!

+ Christmas Lunch & Gifts



Sponsored by our friends
Variety the Children's Charity



Activities will include:

- Christmas crafts
- DIY Bon bons
- Gratitude activity
- Christmas gifts
- Christmas games

L.O. 1, 2, 3, 4

Friday

19th December

Excursion

Odeon Cinema Semaphore



Zootopia 2, Rated: PG

+Popcorn included

Arrive by: 8:30am

Return: 1pm

Extra Activities:

- Zootopia related activities
- Dress up character play
- Free play

L.O. 1, 2, 4, 5



+ merry +
Christmas
+



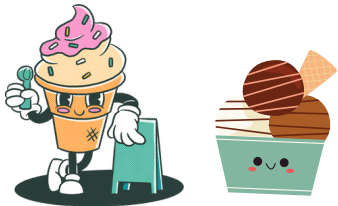
WEEK 2 HOLIDAY PROGRAM

Monday

5th January

Proposal winner: Hannah

+ Ext: Home Corner
Ice cream Day



Activities:

- Sundae bar
- Home Corner Play
- Ice cream in a bag
- Ice cream slime
- Puffy paint ice-cream

L.O. 1, 2, 4,

Tuesday

6th January

Excursion

**Bowland
(Salisbury)**



**Enclosed shoes (sneakers) to
be worn to bowl in**

**Arrive by: 9:15am
Return: 2pm**

Extra Activities:

- Minute to win it games
- Free play

L.O. 1, 2, 4, 5

Wednesday

7th January

Theme Day

Playing with Nature



Activities will include:

- Animal trackers
- Terrariums
- Mini figures
- Sand art
- Kinetic sand
- Nature play

L.O. 1, 2, 4, 5

Thursday

8th January

Theme Day

Games Day



Activities will include:

- Play our new board games
- Group games
- Escape room challenge

L.O. 1, 2, 3, 4

Friday

9th January

Excursion

**Largs Bay Swim
Centre**



School-aged only

**Please bring swim wear, a
towel and goggles**

**Arrive by: 8:45am
Return: 1:30pm**

Extra Activities:

- Toy Fish racing
- Arts & Craft activities
- End of day movie

L.O. 1, 2, 4, 5



WEEK 3 HOLIDAY PROGRAM

Monday

12th January

Theme Day
Building Masters



Activities will include:

- Building challenges (Individual & Group Challenges)
- Timed Challenges

L.O. 1, 2, 3, 4



Tuesday

13th January

Excursion
Odeon Cinema



Pout Pout Fish (P.G)

Includes
popcorn or choc top

Arrive by: 8:45am

Return by: 1:00pm

Activities will include:

- Arts & Crafts friendship activities
- Group & Teamwork activities
- Outdoor/Gym play

L.O. 1, 2, 4, 5



Wednesday

14th January

Incursion
Retro vs Modern Tech
+
Games to U



Please do not bring any tech items, Game 2 U provide everything

Activities will include:

- Lazer Tag
- Wii Games
- Old school games
- Group game

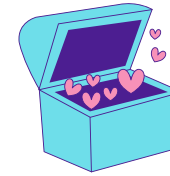
L.O. 1, 2, 4, 5



Thursday

15th January

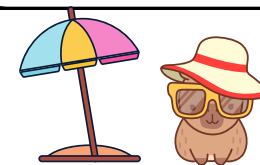
Theme Day
Memory Boxes & Keepsakes



Activities will include:

- Making our own memory boxes to take home
- Friendship cards
- Friendship bracelet
- Sharing a favourite memory with the group
- Gratitude activity

L.O. 1, 2, 3, 4



Friday

16th January

Excursion
The Beachouse



School-aged only

Please bring swimwear for the waterslides, a towel and a change of clothes

Arrive by: 10am

Return by: 3:30pm

Activities will include:

- Summer vibes colouring-in
- Free play

L.O. 1, 2, 4, 5



WEEK 4 HOLIDAY PROGRAM

Monday

19th January

Theme Day

Back to School Fun

+

Collections for
Puddle Jumpers



Activities will include:

- Decorate your own waterbottle
- DIY Bag or Key chains
- Design your own Pencil case

L.O. 1, 2, 3, 4

Tuesday

20th January

Theme Day

**Fluff n Stuff
Squishies & More**



Activities will include:

- Paper Squishys
- Squishy surprise buddy up activity
- Muffin making
- Fluffy sensory tub

L.O. 1, 2, 3, 4

Wednesday

21st January

Incursion

**Water Play Day
with Kelly Sports**



Arrive by: 9am

**Please bring a rash vest for the
water games, towel and spare
clothes**

Activities:

- Water games with the Kelly Sports team
- Water/sprinkler play & games

L.O. 1, 2, 4,

Thursday

22nd January

Theme Day

**Celebration of
You Day!**



(+ Ms Ali's Birthday)

**Catered
Lunch Provided**

Activities will include:

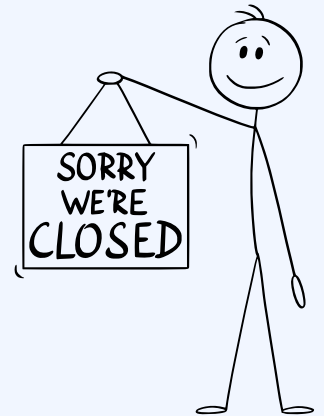
- Celebrating our amazing OSHC children
- Arts & craft activities
- Games
- Free play
- Dance party!

L.O. 1, 2, 3, 4

Friday

23rd January

Closed for P.D.



Complying Written Agreement and Consent

Hours of Operations	Monday – Friday 7:00am – 6:00pm (Closed Public Holidays) Closed Monday 22 nd December 2025 – Friday January 23 rd 2026		
Between	Parent/Guardian full name: Address		
For the care of:	Child's full name: Date of birth: _____ Year level: _____		
In patnership with	Hendon Primary School OSHC Phone: 0411 138 945 ABN: 98249239182 Email: hendon.oshc490@schools.sa.edu.au		

School age: \$78.00 & Preschool: \$83.00

Signed: _____

Date: _____

Individual risk assessments are placed and reviewed for all individual excursions, and any other individual activities where potential risk might be present. All risk assessments are available at the service.

On their designated booked days, I give permission for my child to travel to the named excursion destinations via Grant's coachlines, unless specified otherwise, buses are fitted with seatbelts.

Please note Monday the 15th of December is a walking excursion.

Signed: _____

Date: _____

Booking Request Form

Child's name: _____

Year level: _____

Activity	Date	Attendance Requested (Please Tick)	Booked/Waitlist (office use only)
Excursion: Glitter Pines Immersive Christmas Experience	Monday 15 th December		
OSHC KK Shop	Tuesday 16 th December		
Christmas cooking & plate decorating	Wednesday 17 th December		
Santa's Checklist to Christmas (Sponsored By Variety the Children's Charity)	Thursday 18 th December		
Excursion: Odeon Cinema - Zootopia 2 (PG)	Friday 19 th December		
Ice-cream Day	Monday 5 th January		
Excursion: Salisbury Bowland	Tuesday 6 th January		
Playing with Nature	Wednesday 7 ^h January		
Games Day (Boardgames & more)	Thursday 8 th January		
Excursion: Largs Bay Swin Centre	Friday 9 th January		
Building Masters	Monday 12 th January		
Excursion: Odeon Cinema - Pout Pout Fish (P.G.)	Tuesday 13 th January		
Retro vs Modern Tech Day	Wednesday 14 th January		
Memory Boxes & Keepsakes	Thursday 15 th January		
Excursion: Beachouse	Friday 16 th January		
Back to School Fun	Monday 19 th January		
Fluff and Stuff, Squishy's & more!	Tuesday 20 th January		
Incursion: Water Play Day	Wednesday 21 st January		
Celebration of You Day!	Thursday 22 nd January		
CLOSED for P.D.	Friday 23 rd January	_____	_____

Excursion Information

Destination	Proposed Activity	Items required to bring to excursion	Time away from OSHC	Number of Children	Educators to children
Glitter Pines Immersive Christmas Experience Hendon	Walk to the Glitter Pines Immersive Christmas Experience and explore it, then walk back to OSHC	Water bottle	1.5 hours	55	1:8
Odeon Cinema - Zootopia 2 (PG) Semaphore	Watch Zootopia 2 (Rated PG) with popcorn as a snack	Lunch & water bottle	3. 25 hours	49	1:8
Salisbury Bowland Salisbury	Bowling with some hot chips as a snack	Enclosed shoes (sneakers), Lunch & water bottle	3.75 hours	49	1:8
Largs Bay Swin Centre Largs Bay	Swimming & Water Safety	Swimwear, towel, goggles, lunch & water bottle	3 hours	49	1:8
Odeon Cinema - Pout Pout Fish (PG) Semaphore	Watch Pout Pout Rated (PG) with popcorn or choc top as a snack	Lunch & water bottle	3.25 hours	49	1:8
Beachouse Glenelg	Rides, Waterslides, Train, Mini Golf, Carousel, Playground	Swimwear, towel & change of clothes + lunch & water bottle	3.5 hours	49	1:6

Movie Popcorn Form

Friday 19th December

Complete 1 form **per child**

Child's name:

Would your child like popcorn (please tick)?



Yes

☐

No

☐

Movie Snack Form

Tuesday 13th January

Complete 1 form **per child**

Child's name:

Please tick one snack option per child, popcorn or a choc top icecream.

☐

Or

☐

Vanilla

☐

Mint

☐

Boysenberry

Photographic consent



Our **Santa's Checklist to Christmas Day** is a sponsored event by Variety the Children's Charity of S.A.

They ask us to take photos of the event to show them and these may be shared on their website and social media platforms and become the property of Variety the Children's Charity S.A.

I understand the above, and give permission for photos with my child
(child's name): _____ in them
to be shared with Variety the Children's Charity of S.A.

Please circle Yes or No below and sign.

Yes

No

Signature: _____

Photographic consent



Our **Santa's Checklist to Christmas Day** is a sponsored event by Variety the Children's Charity of S.A.

They ask us to take photos of the event to show them and these may be shared on their website and social media platforms and become the property of Variety the Children's Charity S.A.

I understand the above, and give permission for photos with my child
(child's name): _____ in them
to be shared with Variety the Children's Charity of S.A.

Please circle Yes or No below and sign.

Yes

No

Signature: _____