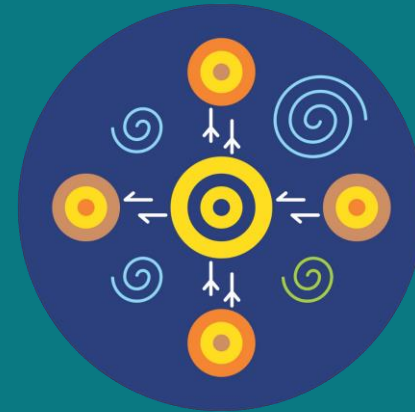


2026 Site Learning Plan

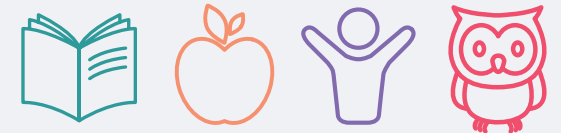
REIDY PARK PRIMARY SCHOOL



WHOLE SCHOOL LEARNING GOAL



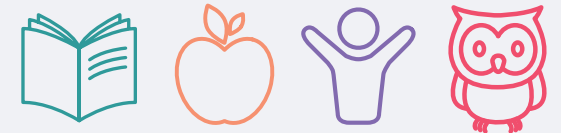
If we successfully implement Playberry, White Rose, and our identified PBL strategies to their full extent, we will create the optimal conditions to ensure that student achievement reflects the statistical norms of 80% at or above average, 15% below average, and 5% significantly below average, within DIBELS and PAT testing.



PROFFESIONAL LEARNING 2026



Engaging in professional learning around Cognitive Load Theory, Data Literacy and Relational Learning, will equip us with increased knowledge to inform our teaching practice. These frameworks offer valuable lenses for planning and delivering high-quality learning programs. By applying Cognitive Load Theory, we can better structure environments and content to support student understanding and retention. Through enhanced Data Literacy, we can more effectively interpret student data and tailor our instruction to meet learner needs. By prioritising strong relationships with students and families, we create a supportive and engaging environment that enhances student wellbeing and motivation, leading to improved academic outcomes. Together, these areas of focus will strengthen our collective capacity to design impactful learning experiences for all students.



2026 Site Learning Plan

Reidy Park Primary School



STRATEGIC GOAL A

To embed a whole-school, low variance curriculum in Mathematics

Teachers use the White Rose program as the foundation for delivering targeted mathematics instruction, incorporating the key elements outlined in the resource. These elements include effective questioning, ongoing checks for understanding, opportunities for reflection, and the use of manipulatives to support conceptual development. By consistently applying these strategies, we ensure a comprehensive and engaging approach to maths teaching that meets the diverse learning needs of our students.

Strategies

BENEFITS

Consistency in Learning: It ensures that all students receive a consistent educational experience, regardless of the teacher or classroom. This consistency helps in maintaining uniform standards across different classes and schools

Equity: A low variance curriculum can help reduce disparities in educational outcomes by providing all students with access to the same high-quality content and learning opportunities

Predictability: Teachers can plan more effectively when they know the curriculum is stable and predictable. This allows for better preparation and delivery of lessons

Assessment Alignment: With a consistent curriculum, assessments can be more accurately aligned with what is taught, leading to fairer evaluations of student performance

Professional Development: Teachers can focus their professional development on mastering the curriculum content and effective teaching strategies, rather than constantly adapting to new materials.

EFFECTIVE PRACTICES

Build collective responsibility for improved practice and student learning

Use data and evidence to impact learning

Strengthen responsive teaching and learning

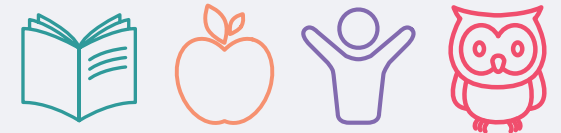
AREAS OF IMPACT

Wellbeing

Equity & Excellence

Learner Agency

Effective Learners



2026 Site Learning Plan

Reidy Park Primary School



STRATEGIC GOAL B

To embed a whole-school, low variance approach to teaching reading skills

Teachers implement the Playberry-Laser program as the central element of our whole-school approach to teaching English skills. Explicit direct instruction underpins this practice, with teachers ensuring active student participation in all aspects of each session through purposeful classroom movement and by adhering to the program’s prescribed methods. Continuous monitoring of engagement is essential, enabling teachers to check for understanding and ensure that tasks are completed accurately. Ongoing data collection informs our practice by identifying learning gaps, allowing us to apply a targeted, tiered approach to intervention where needed. Daily targeted fluency sessions provides ongoing reading practice within all classrooms.

Strategies

- Deploy Playberry in Years F-2

BENEFITS

Consistency in Learning: It ensures that all students receive a consistent educational experience, regardless of the teacher or classroom. This consistency helps in maintaining uniform standards across different classes and schools

Equity: A low variance curriculum can help reduce disparities in educational outcomes by providing all students with access to the same high-quality content and learning opportunities

Predictability: Teachers can plan more effectively when they know the curriculum is stable and predictable. This allows for better preparation and delivery of lessons

Assessment Alignment: With a consistent curriculum, assessments can be more accurately aligned with what is taught, leading to fairer evaluations of student performance

Professional Development: Teachers can focus their professional development on mastering the curriculum content and effective teaching strategies, rather than constantly adapting to new materials.

EFFECTIVE PRACTICES

Build collective responsibility for improved practice and student learning

Use data and evidence to impact learning

Strengthen responsive teaching and learning

AREAS OF IMPACT

Wellbeing

Equity & Excellence

Learner Agency

Effective Learners



2026 Site Learning Plan

Reidy Park Primary School



STRATEGIC GOAL C

To create effective conditions for learning through embedding targeted Positive Behaviour for Learning Practices

Teachers create effective conditions for learning by establishing classroom environments that are mindful of students' cognitive load, maintain high expectations, and implement clear, consistent routines. There is also an emphasis on positive reinforcement to support student engagement and wellbeing. These practices work together to foster a supportive, structured, and motivating learning atmosphere where all students can thrive.

Strategies

BENEFITS

Emotional Regulation: PBL strategies provide clear expectations and supportive routines that help students manage their emotions and respond calmly to challenges.

Positive School Climate: Consistent use of PBL strategies, contribute to a supportive and inclusive school culture, where students feel safe and valued.

Reduced Behavioural Issues: By regularly promoting and reinforcing positive behaviours, PBL strategies decrease the frequency of disruptive incidents, allowing more time for learning and engagement.

Better Relationships: PBL encourages the development of trust and respect between staff and students, strengthening connections and promoting open communication.

Equity and Inclusion: Consistently applying PBL ensures that behaviour expectations and supports are accessible and fair to all, allowing every student to participate fully and thrive, regardless of background or ability.

EFFECTIVE PRACTICES

Activate the SA curriculum for meaningful and authentic learning

Build collective responsibility for improved practice and student learning

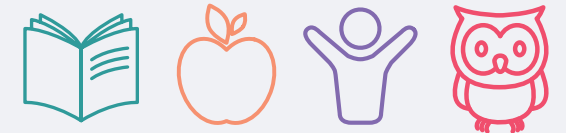
AREAS OF IMPACT

Wellbeing

Equity & Excellence

Learner Agency

Effective Learners



2025 Site Learning Plan

Reidy Park Primary School



STRATEGIC GOAL D

To strengthen and prioritise relationships with community stakeholders, enhancing school connections and fostering students' motivation to learn.

Teachers focus on partnering with students, families and the community to enhance student outcomes. Classes will provide opportunities to discuss, share, celebrate, and develop student learning and progress. Staff will regularly engage with parents through conversations and electronic platforms, ensuring families are informed about their child's current learning and future learning needs.

Strategies

BENEFITS

Increased Engagement: Engaging families and the broader community fosters a sense of ownership and involvement in the school, leading to higher levels of participation in school activities and decision-making

Improved Student Outcomes: When families and communities are actively involved, students often show improved academic performance, attendance, and behaviour

Trust and Communication: Strong relationships foster open communication and trust between the school and the community, leading to more effective collaboration and problem-solving

Sustainability: Community support can contribute to the sustainability of school initiatives, ensuring long-term success and improvement

EFFECTIVE PRACTICES

Establish and nurture a culture of learning

Strengthen responsive teaching and learning

Lead contextualised improvement

AREAS OF IMPACT

Wellbeing

Equity and Excellence

Learner Agency

Effective Learners

