

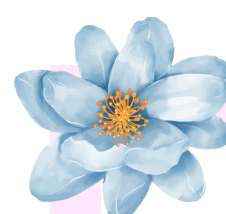
September 2025

MAWSON LAKES SCHOOL OSHC

SUN	MON	TUES	WED	THURS	FRI	SAT
WEEK 7	1	2	3 OSHC GOVERNING COUNCIL	4 PUPIL FREE DAY	5 SCHOOL CLOSURE	6
WEEK 8	7	8 SCHOOL GOVERNING COUNCIL	9	10	11	12
WEEK 9	13	14	15	16	17 COLOUR RUN	18
WEEK 10	19	20	21	22	23 END OF TERM 3, 2PM DISMISSAL	24
VAC CARE WEEK 1	25	26	27	28	29	30

OSHC FORMS

When submitting forms to OSHC, kindly send them directly to the OSHC email instead of using Audiri. Messages sent to Audiri for OSHC purposes will not reach us. In future this may hinder your child's booking.



VACATION CARE

Reminder that the Vacation Care forms are out and are due back Friday the 5th of September - Week 7. Please make sure all changes to bookings are done before this date, otherwise you will be charged.



VACATION CARE

Vacation Care opening hours are: 7.00am-6.00pm

Please ensure that on excursion days, your child is dropped off before the bus is due to leave. You will find these times on the Vacation Care Program.

Please ensure you let us know if someone that is not on your child's enrolment form is picking them up. We will need consent from a parent/guardian before allowing them to leave.

CANCELLATION POLICY

If you are wanting to cancel a booking, this must be made 1 week in advance for the account not to be charged. If you have any questions, please see Tatum or Sue. As of Term 2 a 'Not Notified Fee' of \$5 took effect and will be charged to your account if we are not informed of your child's absence.



FAMILY/PARENT CONTRIBUTIONS

We would like to hear what things you would like to see your children doing at our service. This could include experiences, cultural holidays and celebrations, or personal qualities you would like to see in your child. Your thoughts will be reflected upon in the monthly programs.

ACCOUNTS

Please make sure that your account is paid fortnightly and does not exceed \$250. Failure to do this will result in all care being cancelled until the account is paid.



Monthly Quote

ALL THINKING BEGINS WITH WONDERING.

CONTACT US ON

0401 121 318

MAWSONLAKES.OSHC@SCHOOLS.SA.EDU.AU