

Dates to Remember

Week 4

Wednesday 20th May
Governing Council
Meeting

Friday 22nd May
National Walk Safely to
School Day

Week 5

Thursday 28th May
Assembly
Classes Presenting
G1 & G2

Friday 29th May
Pupil Free Day

Week 6

National Reconciliation
Week

Week 7

Monday 8th June
King's Birthday Holiday

Week 8

Wednesday 17th June
Governing Council
Meeting

Friday 19th June
Assembly
Classes Presenting
R5 & R6

A Note From the Principal

Dear parents and carers,

Welcome back to Term 2! It has been a very settled and positive start to the term, with students quickly reconnecting with routines, learning and each other. We have another big term ahead filled with learning, fun and exciting opportunities for our students both inside and outside the classroom.

School Green Spaces

One area we are particularly excited about is the continued development of our green spaces across the school. Over the coming months, you will see significant progress in both the Nunga Garden and the re-establishment of our kitchen garden and vegetable patch. We are also trying our luck and applying for another Greening Adelaide Grant to create a wellbeing and sensory garden around the stage area in the Yellow Yard. It's rare for schools to secure these grants two years in a row, but we're giving it a go!

Our vision is to create a greener, richer outdoor learning environment at Salisbury North Primary School. We want students to be actively involved in growing produce, whether through the veggie patch or Bush Tucker Garden, and to experience the full process of picking, cooking, tasting and learning from what they grow. But this will take time to develop over the coming months and years!

Research is very clear about the benefits of young people engaging with nature. Time spent outdoors and connected to natural environments supports wellbeing, reduces stress, builds responsibility and curiosity, and encourages creativity and problem-solving. Nature-based learning also helps students develop a stronger sense of connection to the world around them and can positively impact both engagement and learning outcomes.

For more information and photos of the progress so far, flick further through the newsletter for a full garden update.

A Note From the Principal continued...

OSHC Morning Tea

Our OSHC team would love to invite all families to a Morning Tea next Wednesday 20th May from 8:30am–9:00am in the OSHC Room. Come in for a coffee and something to eat, check out the OSHC space and learn more about the opportunities on offer for students.

We are still exploring ways to continue growing engagement and numbers in the service, so we'd love to see as many families there as possible.

Walk to School Day

We are very excited for our upcoming Walk to School Day on Thursday of Week 4!

This is the first time we have tried an event like this, and it's always exciting to introduce new traditions and opportunities for connection. Events like these help strengthen school culture, build relationships and create a positive sense of belonging across the school community.

Curiosity and Learning

Curiosity is a central focus of our 2026 Site Learning Plan. At Salisbury North, we want our students to be curious learners — students who ask questions, wonder how things work, seek answers, think critically and explore ideas deeply.

Curiosity is about more than simply receiving information because a teacher provides it. It's about students actively engaging with learning, challenging themselves to think deeply and making meaningful connections to the world around them.

Research shows that curiosity is strongly linked to higher levels of engagement, achievement and lifelong learning. Throughout the year, our educators are continuing to learn more about how we can create learning environments and experiences that spark curiosity in both learning and life for our young people.

Parking Reminder – Rolleston Avenue

A reminder to families to please use the Kiss and Drop zone correctly on Rolleston Avenue and avoid parking in designated "No Parking" areas. Council inspectors may issue fines for illegal parking.

Most importantly, incorrect parking creates a busy and confusing environment for students entering and exiting school. For the safety of all students and families, please follow the road signage and markings carefully.

Thank you, as always, for your ongoing support of our school and students.



Warm regards,
Stefan Parente
Principal

A Note From the Assistant Principal of Operations and Mathematics

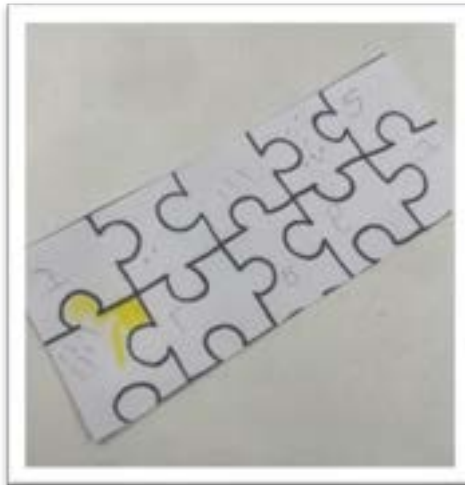
Orbis Mathematics Training

You may have noticed or heard over the past year or two, that many of our teachers across the school have been involved in a specialised training, called Orbis Mathematics. This is a great opportunity designed for teachers working in Junior Primary and Primary classrooms and it aims to deepen teachers' mathematical content knowledge and improve their pedagogical skills for teaching mathematics to young learners. It has been great to see teachers come back to school and try their new learning in different topics with their students.

"I really enjoyed the training because It not only gave me hands on learning that related to my students currently learning but also encouraged me to think outside the box with my Maths lessons, which has led to some really engaged experiences." - Sarah Friend, R4



Towers of 10, students organised the blocks into towers of 10 blocks, practicing 1 to 1 correspondence



Students using different ways to represent to numbers 1-10



Students placing the pieces onto the correct number that matches the number of the piece.

Reporting using EMS

This year, we are changing the system we use to write student reports. From now on, we will be using EMS – the same platform that teachers and administration staff use to record attendance and manage all student information. This will help to make reporting easier and more consistent across the school and teachers have given some feedback about the types of comments and feedback that is reported against each student. Our aim is to ensure student achievement and progress is clearly communicated home to families. More information about this will come later in the term. As reports will be emailed out to families, please make sure your current email address is on our system. You can do this via your classroom teacher or directly to the Front Admin team.



Regards
Mel Dudek
Assistant Principal

Recycling Bottles and Cans @ SNPS

Dear Families,

Our school is taking part in a 10 cent recycling program to help support our students and reduce waste around the school.

You may notice black and red crates placed in the Red Yard, Yellow Yard and near the pit. Students are encouraged to place their empty drink cans, cartons and plastic bottles into these crates instead of the rubbish bins.

At the end of each week, the containers will be collected and taken to a recycling depot. All money raised through the program will go towards purchasing equipment and resources for our school.

This is a great way for students to learn about recycling, caring for the environment and supporting our school community. Thank you for encouraging your child to participate in this program.



Mothers Day Stall : Thank you!



A huge thank you to everyone who supported our Mother's Day Stall by purchasing gifts. The students were so excited and loved having the opportunity to choose something special for their mums, grandmothers and other important people in their lives.

Your support helped make the stall a wonderful success, and we are very excited to share that we sold out of gifts! It was lovely to see so many happy faces and excited students throughout the day.

Thank you again for your continued support of our school and special events.

PB4L



WHAT WE'RE LEARNING IN PB4L

Our lesson focus across the school for the last two weeks has been to encourage others

Encouraging others

At Salisbury North Primary school we show teamwork by

- Recognising and celebrating others' strengths.
- Supporting others' when they are faced with a challenge.

WHAT DOES ENCOURAGING OTHERS MEAN?

To encourage others means to use kind words or actions to help someone feel confident, brave and supported, especially when they're trying something new or finding something hard.

We can show that we are being encouraging by recognising and celebrating others' strengths and supporting other's when they are faced with a challenge

EXAMPLES OF SALISBURY NORTH BEING ENCOURAGING

Some classes have been practising being encouraging by play games and supporting their teammates, giving positive feedback in learning and writing encouraging notes to each other and sharing the notes as a class display.

Senior students have also introduced a secret encourager each day whose responsibility it is to pick out another student at random and have to do acts of encouragement throughout the day. At the end of the day in our community circle, students have to pick who they think was their secret encourager. If they get it correct, that person receives a token for showing encouragement throughout the day.



PB4L



WHAT WE'RE LEARNING IN PB4L

R3 & SLHV earned the most value leaves across the school. R3 earned 669 leaves and SLHV earned 554. We were blown away by the effort from both the students and the teachers!



Congratulations to Y1 and R3 for showing fantastic audience skills at assembly



Winners of School Value Award - These amazing students from Reception through to Year 6 were recognised at our Week 2 Assembly for showing exceptional commitment to one of our five School Values. Along with their award, they also received a special wristband to match. Congratulations, superstars!

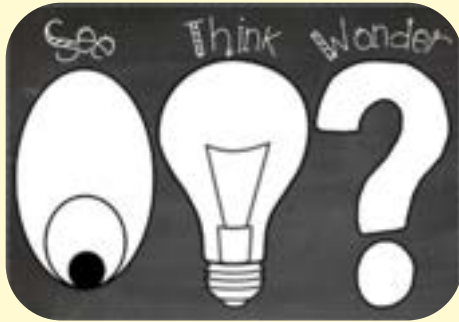




Anzac Day

Y3 & Y4

In Week 1 of Term 2, Y3 & Y4 learnt about Anzac Day. Anzac Day is a special day which occurs every year on the 25th April. Let's We Forget! Our classes came up with many interesting questions about Anzac Day.



We completed a See, Think, Wonder process after reading the following books:
Torty and the Soldier (a story of a true WW1 Survivor) and **Remembering Those Who Serve in War Reflection**.



We are developing the learning disposition 'curiosity' through questioning!



Here are some curious questions from our inquisitive students!

How did the enemy find out about them coming?

-Amuthan Y3

Why did Australia get involved?

- Kian Y4

Where did the villagers hide?

- Chloe Y3

Who started the war?

- Veronica Y4

How many people were forced into the war?

- Ruhee Y3

Which countries were involved in the war?

-Abdul Y4



For our art activity we created a poppy collage. The poppy is the international symbol used to represent the ANZAC's (Australian and New Zealand Army Corps) after poppies were renown for growing in the trenches of war.



Salisbury North PS

Growing Together

Salisbury North Primary School is buzzing with exciting developments across our green spaces and gardens! This year, we are enhancing our school grounds with vibrant new areas including an Indigenous Garden, a productive Kitchen Garden, and dedicated wellbeing spaces for students to connect with nature. These projects are part of our ongoing commitment to sustainability, hands-on learning, and creating a welcoming environment where all students can grow, belong, and thrive together.



FRUIT AND VEGETABLE SCRAPS	GOOD FUN TREATS	PROTEIN SOURCES	BAD FOOD TOXIC FOOD DO NOT FEED
<ul style="list-style-type: none"> Strawberries Blueberries Raspberries Cherries Grapes RED Tomatoes (not green) Banana Apples Apricot Plum Watermelon Cantaloupe Broccoli Cauliflower Leafy Greens Kale Spinach Shiraz Asian Green 	<ul style="list-style-type: none"> Mealworms Crickets Black Soldier Larvae <p>*These treats are available from our store in various sized packets and are a great source of protein and calcium with no to little fat content</p> <p>OTHER TREATS</p> <p>THESE TREATS SHOULD ONLY EVER BE FED IN MODERATION. LARGER AMOUNTS OF THESE ITEMS CAN LEAD TO DEFICIENCIES AND HEALTH PROBLEMS.</p> <ul style="list-style-type: none"> Bread Rice Pasta Oats Yogurt (plain probiotic type only) 	<ul style="list-style-type: none"> Fish—Gardens in olive oil are a great treat along with tuna and other oils of fish Shellfish <p>Eggs—Scrambled and hard boiled. You can also dry egg shells in the microwave or oven and crush for a great calcium source. Remember to feed egg shells separately to your flock as well regulate calcium.</p>	<ul style="list-style-type: none"> Mouldy Food Garlic—ok in small amounts but toxic in large amounts Onion Family Citrus Cut Grass (short pieces are ok if not allowed to mould. Longer pieces may cause sour crop or crop impaction) Avocado Rhubarb Dried Beans Chocolate Candy Sugar Raw potatoes Potato Peelings

You've probably seen our little chicks have all grown up! Oreo, Dumpling, Elsa, Butter and Honey have settled into their new home, preparing to begin laying eggs in the coming months. Keep an eye out for an upgraded coop coming soon!

Food scraps at home? Feel free to drop them to P3 for our chickens and compost!



Our Garden Committee have been busy developing our school garden - including visiting some successful gardens such as Kilkenny PS! Gathering ideas to improve our space will allow us to offer hands-on learning opportunities across all curriculum areas, bolster our Breakfast Club and teach fundamental life skills through cooking!



Salisbury North PS Growing Together

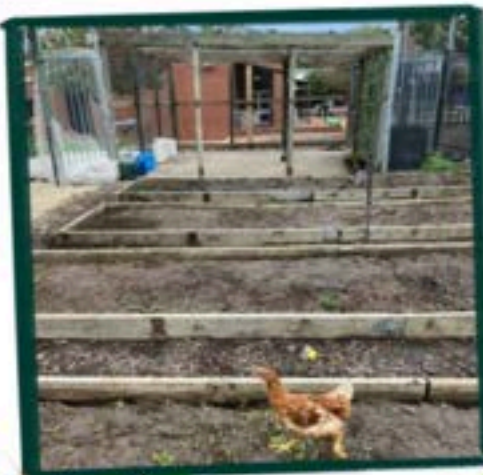


What we've been up to..

Look at how the Kitchen Garden has changed! Students and staff have been working hard to bring our garden back to life - replenishing the soil, repurposing the bike shed and old sandpit areas and expanding the space to include an outdoor classroom and home for our chickens!

What's coming..

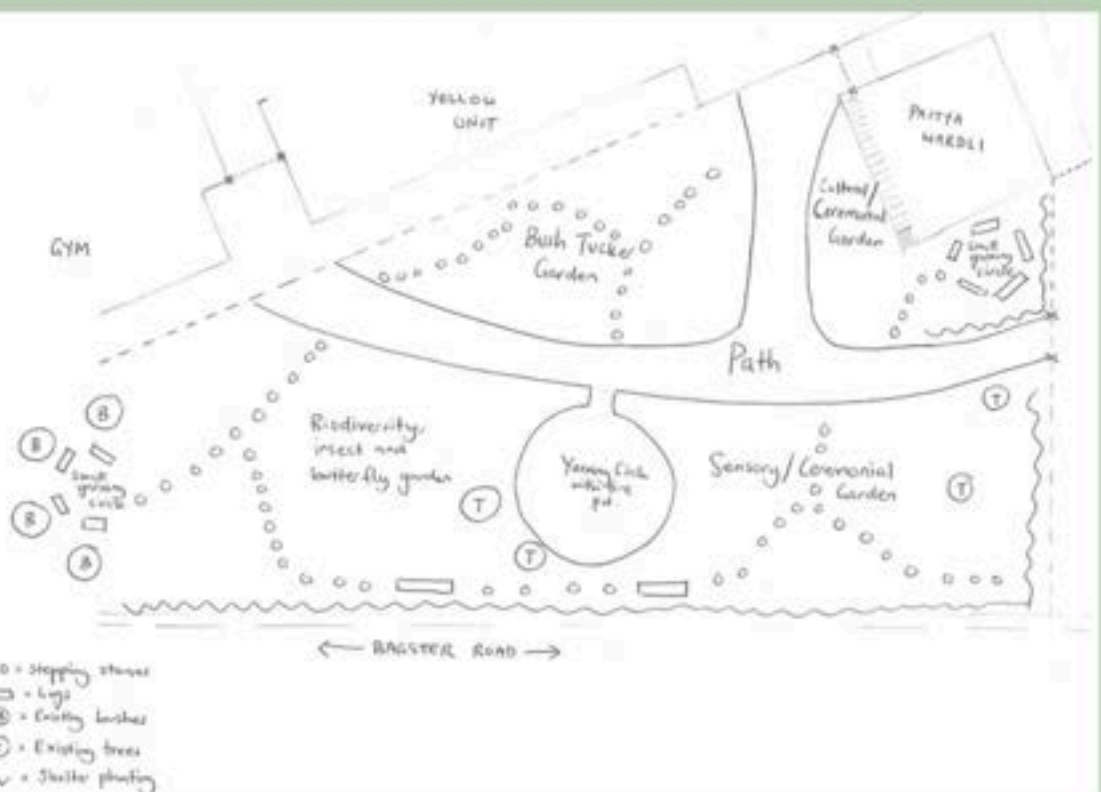
- Paved sandpit area, tables and stools for outdoor classroom.
- Raised garden beds in old bike rack area.
- Bench and sink for prep and clean up of produce.
- Garden bed areas to enjoy during play time.
- Create a cooking program using the produce we grow.
- Establish compost system to recycle our food waste.



Salisbury North PS Growing Together

Pudnapinthe Purrurna Mudli-ana Ngurru: Bringing Biodiversity Back to SNPS

Thank you to everyone who contributed feedback on our Nunga Garden designs—your input was invaluable in shaping this exciting project. We are pleased to share that the ground works for Stage 1 will begin on Monday, 18th May (Week 4), focusing on site preparation and mapping out the garden. The garden will feature six totems, celebrating our house colours, Kaurna house names, and the Kaurna seasons, along with a functional, rock-based fire pit for cultural learning experiences. Please note there will be some temporary fencing and changes to access routes, but disruption will be kept to a minimum. We appreciate your support as we create a vibrant new learning space for our community.



SUSTAINABILITY IN ACTION

Sustainability in Action: Year 5 & 6 Environmental Learning Journey

This year, developing our school garden has sparked a sustainability focus in Years 5 and 6, driven by curiosity, inquiry, and student voice. Watching a thought-provoking documentary, discussing the challenges of climate change and sustainable practices is encouraging students to imagine bold futures. To extend their ideas, students organised a two-day excursion to MOD Museum, Christie Walk, and the Adelaide Botanic Gardens. These experiences deepened their understanding and gave them new ways to make our school and community more sustainable.



MOD Museum: Exploring Our Choices

At MOD Museum's Beginnings exhibition, students interacted with hands-on displays that encouraged them to consider how everyday choices can shape the future. The activities prompted students to think deeply about sustainability, technology, and the power of positive decisions.



SUSTAINABILITY IN ACTION

Christie Walk: Sustainable Living in Action

At Christie Walk, students toured an ecological neighbourhood that uses solar power, water recycling, composting, gardens and even haybale homes! Seeing these sustainable solutions in our own city made real-world connections to their learning at school and showed what's possible in urban communities.



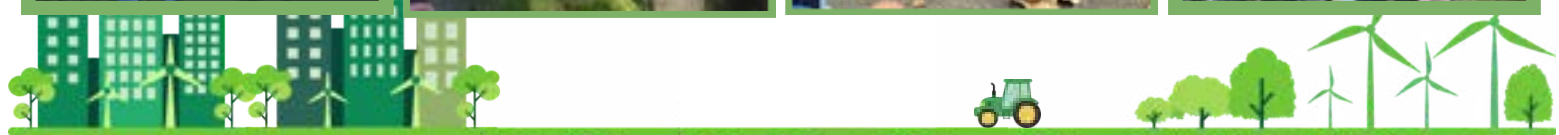
Kitchen Garden, Adelaide Botanic Gardens

In the Kitchen Garden, students planted seeds, learned about worms' impact on soil health, and foraged for fresh produce. They experienced first-hand how simple gardening actions can benefit the environment and our wellbeing, and gained practical tips on growing and preparing healthy food.



Indigenous Culture for Kids

Guided by Trent Hill, students discovered the strong connection between people and Country as they explored the Botanic Gardens. They learned about the 'Supermarket' tree, traditional bushfire use, and sustainable ways of living. This session gave our students a greater respect for Indigenous knowledge and caring for the land.



TERM 1 SNPS TALENT SHOW & STUDENT AWARDS



Vicki Warrick
Assistant Principal

**MOST IMPROVED
STUDENT AWARDS**

ACTIVE KIDS ARE HEALTHY KIDS



JOIN US
FRIDAY 22 MAY 2026



Meeting Point: Happy Home Reserve (next to Road Safety Centre)

Time: Arrive 8:15am

Walk begins: 8:30am sharp (strict cut-off)

What to wear: Sports Day team colours

Students: Must carry their own school bags

School Access:

All Yards closed before school
If not participating: enter via Bagster Rd gates at 8:45am

After the walk:


9:10am Celebration Assembly + Dance Party (Yellow Yard)
Coffee van available for purchase (Red Yard)

Families welcome to join the walk!
Easy parking available at the Road Safety Centre

Join us as we walk together and celebrate our school community!



Salisbury North OSHC Morning Tea



- ▶ Come tour the service and meet our team of educators
- ▶ Discuss your child's needs, interests and expectations
- ▶ Tea, coffee and snacks available

**WEDNESDAY 20 MAY, 8:30-9:30AM
IN THE OSHC ROOM**

YMCA Salisbury North OSHC
E salisburynorth.oshc@ymcasa.org.au
P 0488 055 374 W sa.ymca.org.au/OSHC

**OUT OF SCHOOL
HOURS CARE**



Term 2 Events Calendar 2026

	Monday	Tuesday	Wednesday	Thursday	Friday
Week 1	27th April	28th April	29th April	30th April	1st May
			Year 5/6 Sustainability Research excursion		
Week 2	4th May	5th May	6th May	7th May	8th May
			Nature Play Incursion		Assembly SAPSASA Cross Country
Week 3	11th May	12th May	13th May	14th May	15th May
				PBL Whole School Reward	SAPSASA Athletics
Week 4	18th May	19th May	20th May	21st May	22nd May
			Governing Council Meeting OSHC Morning Tea Year 6 Migration Museum		Grandparents and Special Person Day National Walk Safely to School Day
Week 5	25th May	26th May	27th May	28th May	29th May
		National Sorry Day	National Reconciliation Week	Assembly National Reconciliation Week	Student Free Day
Week 6	1st June	2nd June	3rd June	4th June	5th June
	National Reconciliation Week	National Reconciliation Week	National Reconciliation Week		World Environment Day
Week 7	8th June	9th June	10th June	11th June	12th June
	Kings Birthday Public Holiday		Mid Year Rec Visit	International Day of Play	
Week 8	15th June	16th June	17th June	18th June	19th June
	Refugee Week	Refugee Week	Refugee Week Governing Council Meeting Mid Year Rec Visit	Refugee Week	Assembly Refugee Week
Week 9	22nd June	23rd June	24th June	25th June	26th June
			Mid Year Rec Visit		
Week 10	29th June	30th June	1st July	2nd July	3rd July
					End of Term Talent Show Casual Clothes Day Early Dismissal 1:55pm

Term 3 Events Calendar 2026

	Monday	Tuesday	Wednesday	Thursday	Friday
Week 1	20th July	21st July	22nd July	23rd July	24th July
Week 2	27th July	28th July	29th July	30th July	31st July
	School Photo Day				Assembly
Week 3	3rd August	4th August	5th August	6th August	7th August
	School Photo Catch Up	National Aboriginal and Torres Strait Islander Children's Day	Year 5/6 Camp El Shaddai	Year 5/6 Camp El Shaddai	Year 5/6 Camp El Shaddai Principal's Day
Week 4	10th August	11th August	12th August	13th August	14th August
	Swimming Primary Students	Swimming Primary Students	Swimming Primary Students Governing Council Meeting	Swimming Primary Students	Swimming Primary Students SAPSASA Boys Netball
Week 5	17th August	18th August	19th August	20th August	21st August
	National Science Week Bullying No Way Week	National Science Week Bullying No Way Week	National Science Week Bullying No Way Week	Assembly National Science Week Bullying No Way Week	Student Free Day
Week 6	24th August	25th August	26th August	27th August	28th August
	Book Week	Book Week	Book Week	Book Week Year 3-6 Illustrator Incursion	Book Week
Week 7	31st August	1st September	2nd September	3rd September	4th September
		Book Week Performance		Rec -Yr 2 Children's Author Incursion	Premiers Reading Challenge Ends
Week 8	7th September	8th September	9th September	10th September	11th September
			Governing Council Meeting	Assembly National R U OK Day	Sports Day
Week 9	14th September	15th September	16th September	17th September	18th September
	Parent-Teacher-Student Conference	Parent-Teacher-Student Conference	Parent-Teacher-Student Conference	Parent-Teacher-Student Conference SAPSASA Tag Rugby	Parent-Teacher-Student Conference SAPSASA Tag Rugby
Week 10	21st September	22nd September	23rd September	24th September	25th September
					Talent Show Casual Clothes Day Early Dismissal 1:55pm

Term 4 Events Calendar 2026

	Monday	Tuesday	Wednesday	Thursday	Friday
Week 1	12th October	13th October	14 th October	15th October	16th October
			Nature Play Incursion	Footsteps SAPSASA Soccer	SAPSASA Soccer
Week 2	19th October	20th October	21st October	22nd October	23rd October
		Sensory Rec - Year 2		Footsteps	Assembly
Week 3	26th October	27th October	28th October	29th October	30th October
				Footsteps	World Teachers Day
Week 4	2nd November	3rd November	4th November	5th November	6th November
	JP Swimming	JP Swimming	JP Swimming World Teachers Day celebration Governing Council	JP Swimming	JP Swimming
Week 5	9th November	10th November	11th November	12th November	13 th November
			Remembrance Day	Footsteps	Assembly
Week 6	16th November	17th November	18th November	19th November	20th November
				Footsteps	Student Free Day
Week 7	23rd November	24th November	25th November	26th November	27th November
				Footsteps	
Week 8	30th November	1st December	2nd December	3rd December	4th December
			Governing Council	End of Year Concert	School Closure
Week 9	7th December	8th December	9th December	10th December	11th December
	PB4L Whole School Swimming Excursion		Year 6 Graduation		End of Year Disco Casual Clothes Day Assembly Early Dismissal 1:55pm